

# uvex

PROTECTING PEOPLE



Safety Footwear 2007/2008

*Extremely sporty – extremely safe*

# Value follows innovation

*New corporate vision and industrial health and safety strategy*

The uvex group has successfully completed the transition from turnover to value orientation. In line with this new strategic approach, a new corporate vision has also been developed to provide a basis for the company's long term plans including a clearly defined industrial health and safety strategy and objectives for our different product groups.

## VISION

"In the world of uvex, we intend to be leaders in innovation – creating global value-oriented growth and the number one position in all our markets and areas of activity. **Value follows innovation!**"

In other words, our vision is determined and guided, by the key corporate principles of leadership in innovation and worldwide value-oriented growth.

## MISSION

Within this framework, a mission statement has been defined which describes our prime corporate objectives: "The uvex brand confirms our responsibility. The central theme of **Protecting People** is our mission and this is why we are committed to develop, manufacture and distribute products and services which deliver individual safety and protection in the fields of work, sport and leisure."



At the core of this strategy is the principle of being the „innovative provider of brand systems supported by world class manufacturing expertise“. This includes the goal of providing a product range which is pioneering in technology and coordinated throughout manufacture in our own factories – a “head to toe” range brought together under one brand. This represents an entirely unique position compared with our competitors around the world!

“uvex products should inspire!”

The development of this universal strategic platform is an enormous step forward for the company and ultimately, it will ensure that uvex industrial health and safety products always remain at the leading edge of developments across the different sectors.

The “2007 Top 100 Corporate Comparison” conducted independently and scientifically, voted the UVEX SAFETY GROUP as one of Germany’s most innovative medium sized companies – and we succeeded in securing a place in the top 10 in the “Innovation marketing” category of the ranking! Now officially classified as a top innovator, uvex will continue to demonstrate to its customers that it is an undisputed leader in the field of innovative industrial health and safety solutions.

#### uvex industrial health and safety and prevailing strategic platform of the UVEX SAFETY GROUP

Adapted to specific product and market conditions, our industrial health and safety strategy is defined as follows: “Based on our ‘Protecting People’ mission statement, uvex safety has positioned itself as the innovation based **provider of brand systems from a platform of world class manufacturing expertise**. Structured around the four Strategic Business Units (SBU):

- Head Protection (safety eyewear, prescription safety eyewear, laser safety eyewear, safety helmets, hearing protection, care accessories)
- Workwear (work and safety clothing)
- Footwear (safety shoes and boots, high-performance socks, care accessories)
- Gloves (safety gloves for mechanical and chemical risks)

uvex safety offers market sector-specific **product system solutions** drawn together from our different product groups, and **customer system solutions based on real** market needs.”



The list of contents can be folded out at the back of the catalogue.

# uvex climatec® – climatic comfort

*Innovative climate management from head to toe*

Head protection



uvex airwing B with maximum ventilation surfaces

Protective eyewear



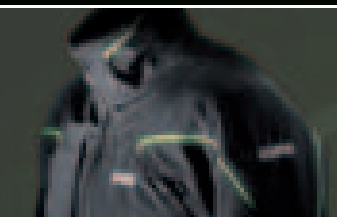
uvex super g – the lightest safety spectacles in the world

Protective gloves



uvex Profas helix® – a new comfort class with cut protection level 5

Protective clothing



uvex texpergo System SoftShell jacket – with innovative body zoning concept

Safety footwear



The UVEX SAFETY GROUP is the only manufacturer in the international personal protective equipment (PPE) sector that has researched climate issues within occupational safety products, resulting in uvex climatec®. A comprehensive climate concept for all areas of activity and work environments. The result: increased well-being, longer lasting productivity and optimal comfort in every situation!

Every workplace puts different demands on the occupational safety system regarding the prevailing climate influences and air movement conditions. Irrespective of warmth, cold, wind and water, activities that require standing, intermittent movements or long-term demands – uvex climatec® offers the solution to keep the body comfortable in every situation and to increase the performance in day-to-day work. To make this possible uvex has combined its competence in research, use of materials and product development and is the only manufacturer of personal protective equipment that presents a functioning climate concept that is applied in an integral approach over all product groups.

**uvex climate competence**

uvex climatec® functions like the body's own climatic system: deviations from the individual climate are balanced and the body temperature remains at a consistently comfortable level. Excess warmth and moisture are efficiently removed reducing the feeling of cold. To effectively improve the climate in an occupational safety system, it is essential to analyse all relevant factors and investigate and understand their mode of operation.

uvex has been researching climate issues for a long time. In collaboration with well-known institutes such as PFI (Pirmasens Testing and Research Institute), the Kaiserslautern Technical College or the Hohenstein Institutes, testing methods and devices were developed that allowed a comprehensive and well-founded measurement of climate characteristics.

		Climatic influences			
		Water	Wind	Heat	Cold
Movement – status	Stationary				
	Intermittent	<b>climatec®</b>			
	Marathon				

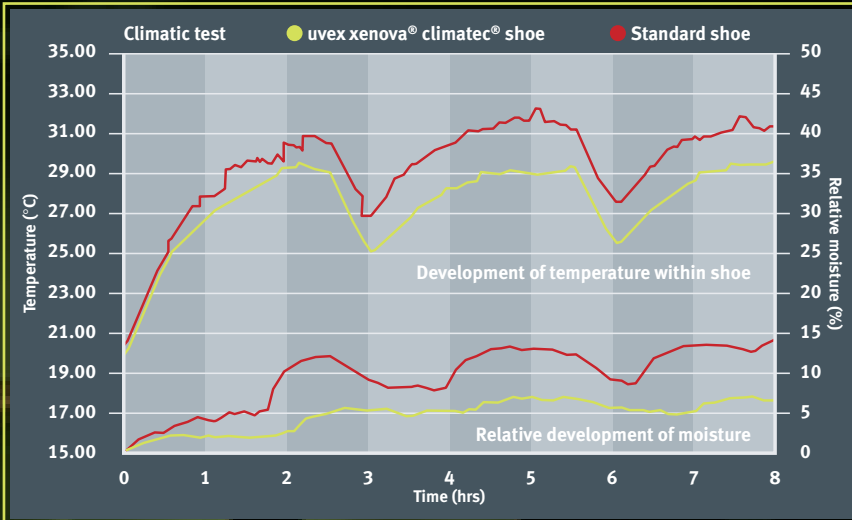


uvex xenova® climatec® – the bamboo fibre liner provides a pleasant feeling when worn.

# guaranteed



The graph shows that heat generation in the shoe is much lower than in a comparable standard shoe. In comparison there is also a great deal less moisture on the skin, resulting in cooler and dryer feet which equates to greater comfort.



## uvex xenova® climatec®

The wearer experiences the pleasant feeling of dry feet thanks to the new uvex bamboo liner. The breathable lining with bamboo components gives the shoe softness, provides a pleasant wearing sensation and absorbs moisture without feeling damp.

In addition, due to the seamless construction of the leg, double material layers (vapour barriers) and no irritating stitches and seams, heat and foot moisture can evaporate to the outside unimpeded.



# uvex manufacturing and technology



## *uvex industrial health and safety – the systems provider with world class manufacturing expertise*

Our corporate philosophy is “Protecting People” – a major responsibility and a fascinating challenge, because at uvex, protecting people is both our goal and our motivation.

To guarantee the outstanding performance of our products, we depend entirely on our expertise and experience. Our own research and development, individual process technologies and decades of know-how are the core strengths which support all uvex product groups.

Without the highly qualified specialists in our product group management teams and manufacturing facilities, without the intensive collaboration of our network of high-calibre technology partners, and not least without the close contact with our customers, we would not be capable of developing products that reaffirm time and again our the credibility of our claim to be the leader in innovation.

### **Quality direct from the manufacturer**

Almost 80 per cent of our entire added value is generated in six manufacturing plants in Germany, three in the rest of Europe and one outside Europe. In these facilities, we combine the latest technologies with innovative drive and a high degree of experience. Our quality standards exceed the most stringent requirements and thanks to our universal quality management system, all our factories are certified in accordance with ISO 9001:2000.

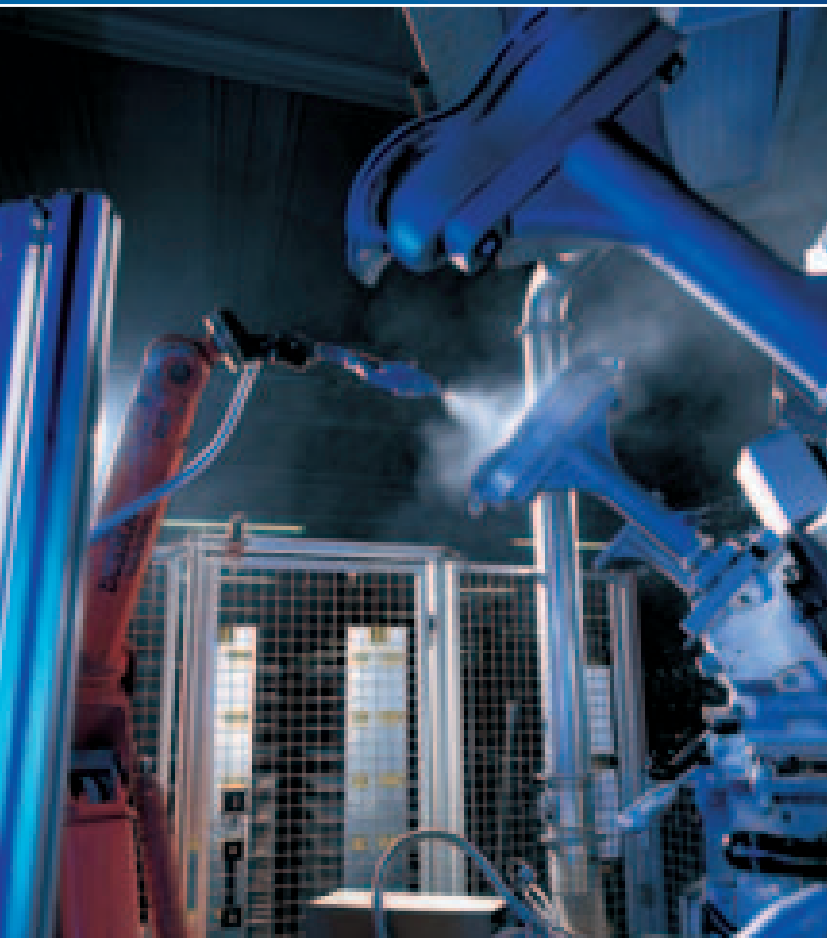
### **Our footwear factory in Italy**

Equipped with the latest technological developments, our factory in Ceva is truly impressive. We manufacture high-quality safety footwear for a diverse range of requirements and applications.

# ogical expertise

## *uvex academy – knowledge for greater safety*

The uvex academy stands for outstanding knowledge in the field of industrial health and safety. Set beside our products and services, uvex is the first manufacturer to have developed and to be able to provide such a pioneering institution. The uvex academy – for the education and training of our customers, employees and industrial health and safety experts. In premises covering 1,000 square metres, uvex is now the reference point and first choice for the provision of outstanding training and education in an environment where health and safety subjects are brought to life. Want to know more about our know-how? Simply request the uvex academy brochure.



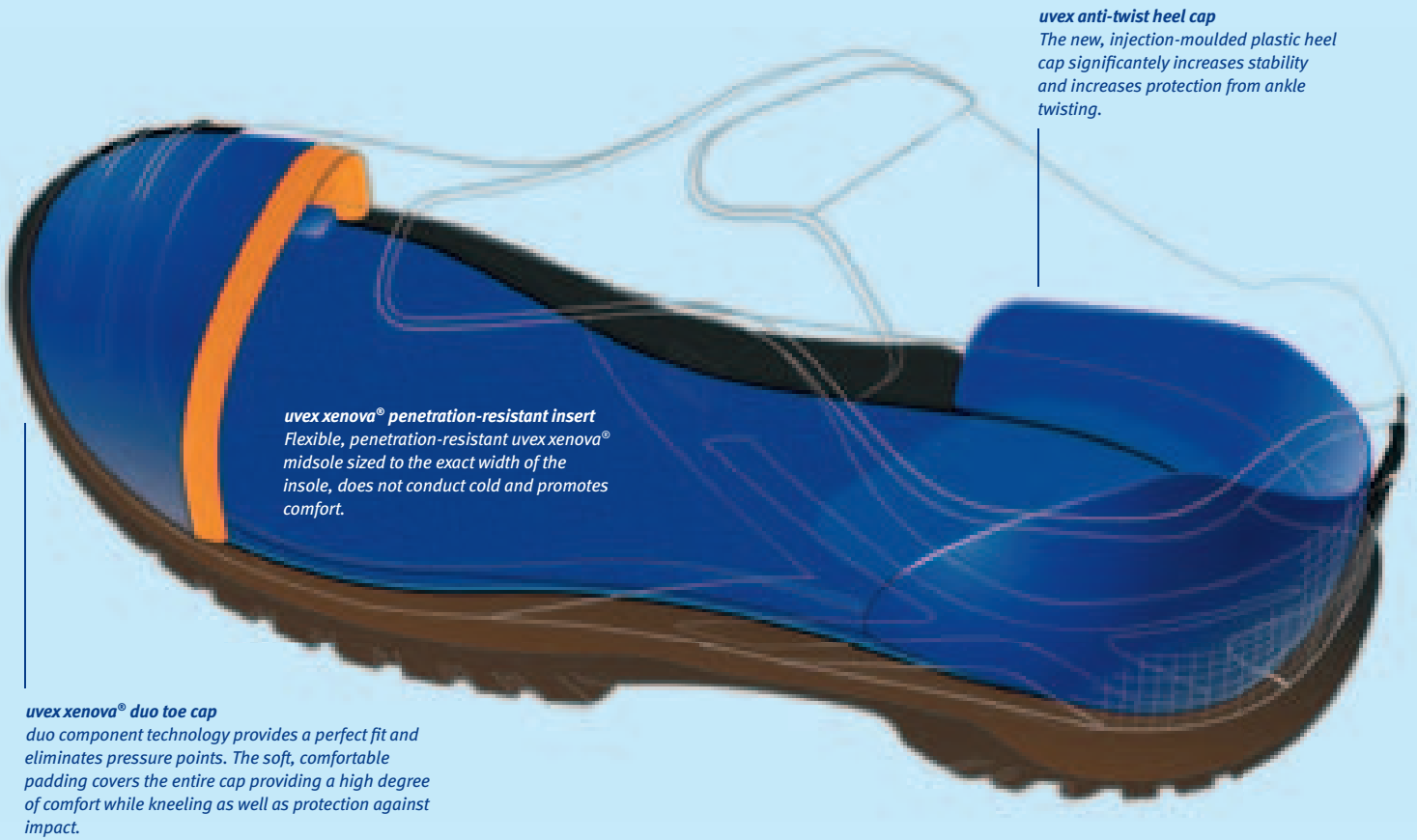
# uvex xenova® system

*Comfort and safety*

## A new dimension in plastics technology.

uvex are committed to protecting people and this mission statement is the motivation and driving force behind our continuous research into new technologies for critical situations. At uvex, a network of scientists and engineers explore new ways to develop innovative and more effective technologies.

The unique, completely metal-free uvex xenova® system is the result of numerous research projects run in conjunction with universities, renowned test institutes and employees from safety engineering companies.



**uvex anti-twist heel cap**  
The new, injection-moulded plastic heel cap significantly increases stability and increases protection from ankle twisting.

**uvex xenova® penetration-resistant insert**  
Flexible, penetration-resistant uvex xenova® midsole sized to the exact width of the insole, does not conduct cold and promotes comfort.

**uvex xenova® duo toe cap**  
duo component technology provides a perfect fit and eliminates pressure points. The soft, comfortable padding covers the entire cap providing a high degree of comfort while kneeling as well as protection against impact.

uvex manufactures the first injection-moulded frame for glasses.

uvex produces their first motorcycle helmet.

With the new patented duoflex® side pieces made of two plastics of different hardnesses, uvex establishes a new dimension in wearer comfort.

The uvex ultrasonic establishes a new benchmark for safety goggles!

» 1958

» 1972

» 1973

» 1978

» 1992

» 1993

» 2001

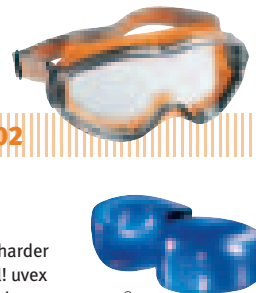
» 2002

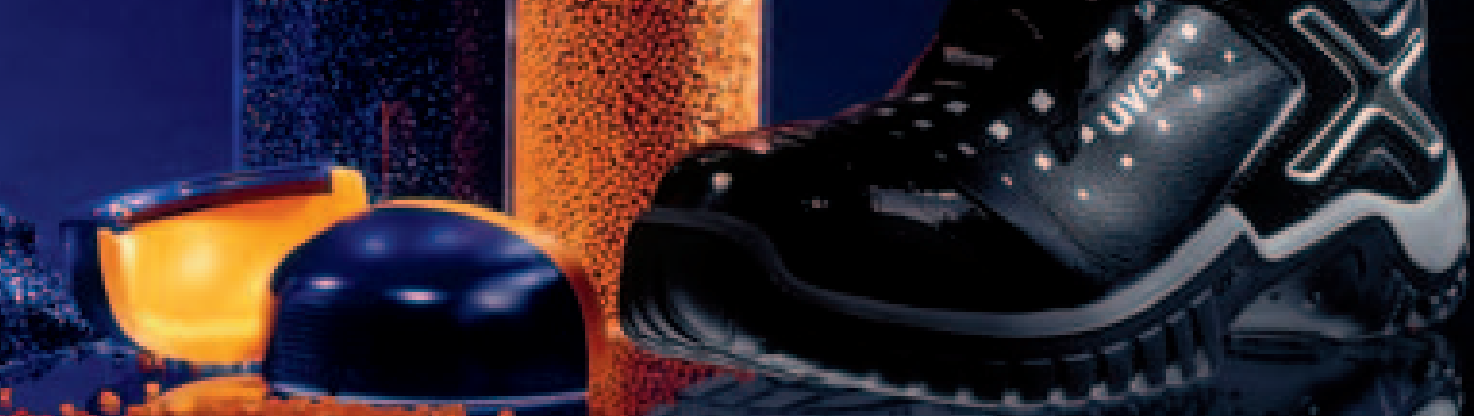
Polycarbonate is used for lenses as an effective alternative to glass.

Lenses are equipped with a scratch-resistant coating system for the first time.

The introduction of the first bicycle helmet made of polycarbonate.

Plastic is harder than steel! uvex develops the uvex xenova® plastic toe cap.





## Two generations of expertise



### In-house manufacturing

At uvex we rely on our own manufacturing expertise, enabling us to monitor production processes and quality at all times. uvex's extensive experience in processing plastics is invaluable – especially when it comes to developing plastic solutions. uvex sports equipment supports successful athletes and Olympic medallists, by providing products with maximum functionality, quality, outstanding wearer comfort and above all, guaranteed safety performance.



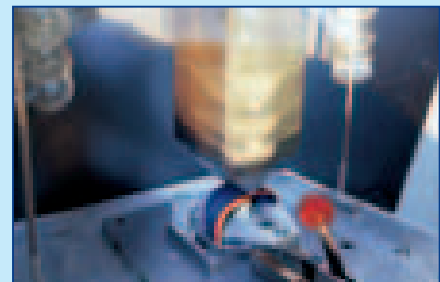
uvex xenova®



uvex xenova® duo

### Real comfort

- patented uvex xenova® technology
- soft padding
- no thermal or electric conductivity
- does not conduct the cold
- ergonomic shape
- metal-free
- antimagnetic



### Absolute safety

- Considerably more residual height in the 200-joule impact test than is required by EN 12568.\*
- Even when subjected to consecutive impacts, the residual height of the uvex xenova® duo toe cap is still greater than that required by the norm.
- Compression resistance (15 kilonewtons required by EN 12568). Result significantly above the requirements of the norm.\*
- Clearly superior to steel and aluminium during tests in accordance with EN 12568.

\* Results supported by tests by the following independent institutes:



uvex xenova® and uvex xenova® duo toe caps are built into the athletic and module ranges. The uvex xenova® system can be found in the uvex xenova® range, in the S3 variants from page 19.

uvex xenova® duo, the second-generation plastic shoe cap, creates a new dimension of comfort.



Andreas Klöden comes in second overall in the Tour de France wearing the uvex fp1 T-Mobile.



uvex present the athletic safety glasses which incorporate both the patented XST and XPC technologies.

>> 2005

>> 2006



uvex develop the uvex xenova® shoe range with the uvex xenova® system. André Lange wins two Olympic medals in Turin wearing the uvex helix rs 750 carbon.



uvex develop the super g, the lightest safety glasses in the world. A total weight of 18 g makes them unique.



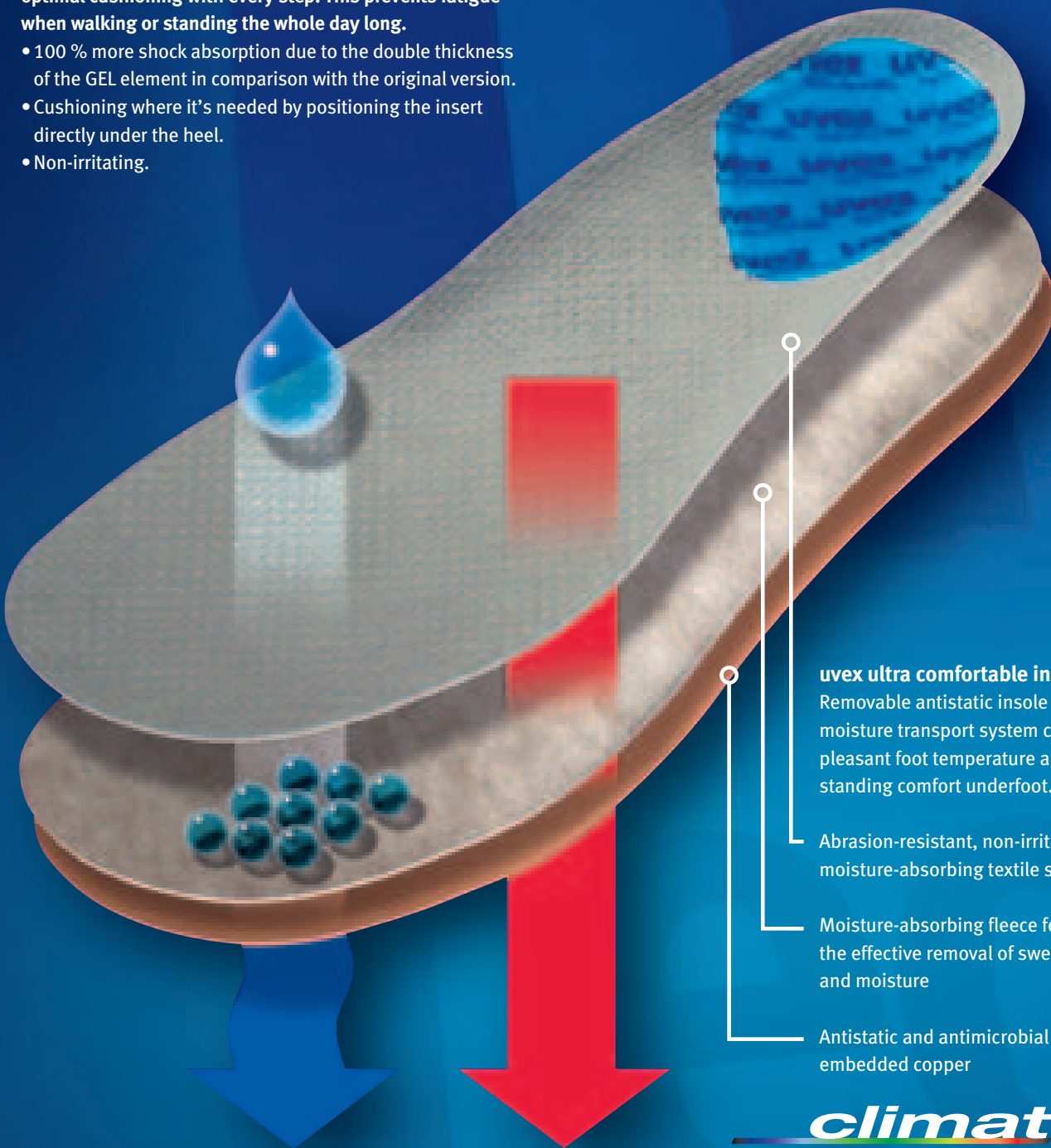
# Ultra comfortable insole

with uvex hydroflex® GEL

## uvex hydroflex® GEL

The new uvex hydroflex® GEL provides the heel with optimal cushioning with every step. This prevents fatigue when walking or standing the whole day long.

- 100 % more shock absorption due to the double thickness of the GEL element in comparison with the original version.
- Cushioning where it's needed by positioning the insert directly under the heel.
- Non-irritating.



### uvex ultra comfortable insole

Removable antistatic insole with moisture transport system creating a pleasant foot temperature and outstanding comfort underfoot.

Abrasion-resistant, non-irritating, moisture-absorbing textile surface

Moisture-absorbing fleece for the effective removal of sweat and moisture

Antistatic and antimicrobial lining with embedded copper

**climatec®**

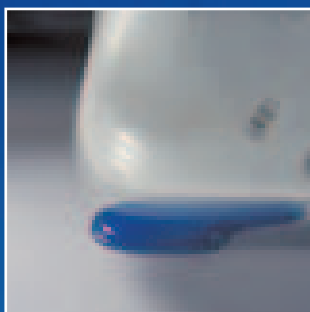
The uvex ultra comfortable insole is part of uvex climatec®.

# Pictograms



### Effective shock absorption

When weight is placed on the foot, the resulting horizontal and vertical impact is absorbed by uvex hydroflex® GEL. The gel inserts are continuously evaluated by dynamic drop ball testing to ensure constant quality and cushioning values.



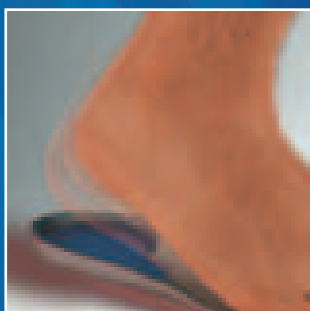
### Cushioning where it's needed – directly under the heel

The gel's complete adaptability to the contours of the heel provides maximum support with maximum comfort.



### Good recovery and stability properties

Tested with excellent results. Developed in conjunction with orthopaedic specialists and adapted for occupational safety applications. Automatically returns to its original shape. Still effective even after long periods of extreme stress.



### Kind on the skin and breathable

Dermatological tests have shown that uvex hydroflex® GEL is exceptionally kind on the skin. It absorbs moisture without losing any of its shock-absorbent properties.



plastic toe cap  
uvex xenova® duo



plastic toe cap  
uvex xenova®



### uvex anti-twist

Injection-moulded plastic heel cap offers significantly improved stability and greater twist protection.



### uvex footfit

Pioneering, anatomically shaped lasts with a curved heel and rounded edges for greater comfort during long periods of wear.



### uvex topshield

An exceptional abrasion-resistant TPU scuffcap which fits over the steel toecap to protect the leather upper in tough conditions and when performing tasks in a kneeling position.



### uvex hydroflex® GEL

provides the heel with optimal cushioning with every step.



The latest generation of uvex hydroflex® DUO GEL for optimal shock absorption in the heel area



### uvex ultragrip

This sole has excellent material properties that enable the uvex origin to cope with the most varied of floors. It provides optimum protection against heat, cold and chemicals.



### uvex softcell

The ultra comfortable softcell midsole made from foamed polyurethane ensures optimal shock absorption on hard surfaces.



Heat-insulating finish in accordance with EN ISO 20345



Cold-insulating finish in accordance with EN ISO 20345



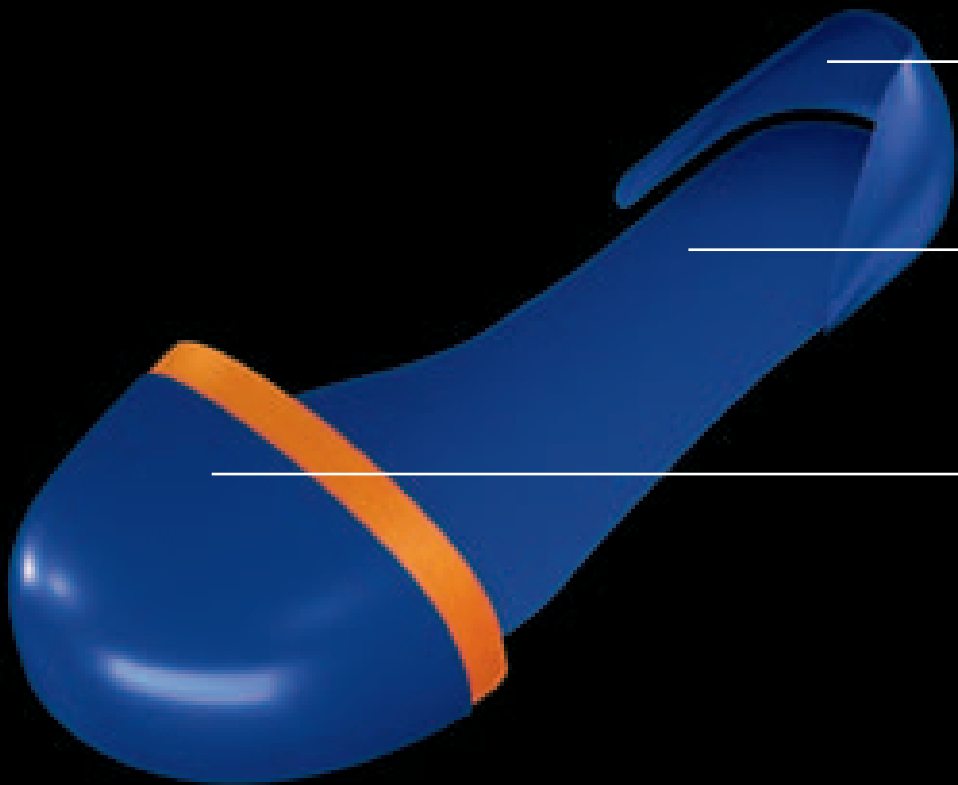
The outsole is heat-resistant for brief exposure in accordance with EN ISO 20345

# uvex xenova®

Intelligent Material Systems

## The uvex xenova® system

100 % metal-free. 100 % comfort and safety.



### uvex anti-twist heel cap

The innovative, injection-moulded plastic heel cap considerably increases stability and offers improved protection from ankle twisting.

### uvex xenova® penetration-resistant insert

Flexible, penetration-resistant xenova® midsole exactly the width of the insole does not conduct the cold, increasing comfort for the wearer.

### uvex xenova® duo toe cap

duo component technology for a perfect fit without pressure points. The cap is fully lined with soft, comfortable padding ensuring increased wearer comfort when kneeling and during impacts.

## uvex climatec®

Innovative head-to-toe climate-control system.

uvex climatec® is the innovative head-to-toe climate-control system. uvex has combined its expertise in research and development with the use of intelligent material and processing technology to create a unique range of climate-optimizing products.

### The comfort factor with uvex climatec®:

- Regulates individual body temperature
- Work with a lasting sense of well-being
- Longer-lasting performance
- Optimum wearer comfort in any situation

*During intense physical activity, sweat production by the feet fills a glass of water by the end of the day. uvex climatec® wicks this moisture away reducing the risk of discomfort caused by blisters, fungal infections or even mild hypothermia.*



*The thermal image proves that less heat is emitted with uvex PTR than with standard lining.*

Our partners in research and technology

**PFI**



# New outsole system

Filled with added value features!

## EXTREM SLIP RESISTANCE



Feel the difference – the newly developed outsole offers better slip resistance.

## COMPLIANCE WITH ESD NORM



PUR outsole fulfils the ESD requirements as standard (resistance to ground < 35 megaohm).

## LACQUER - NEUTRAL



Free of lacquer wetting inhibitors such as silicones, phthalates, etc.

## EXTREMELY LIGHTWEIGHT



The latest generation of PUR outsoles made from Bayflex® Safety Lightweight Polyurethane makes the shoe ultra-light.

## BIOMECHANICS

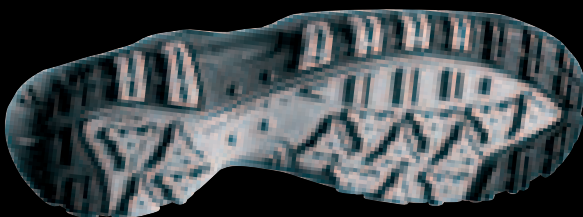


Ergonomically designed outsole tread for outstanding flexibility when walking and standing.



### PUR outsole

- Withstands brief exposure to heat of approx. +120 °C
- Free of lacquer wetting inhibitors such as silicones, phthalates, etc.
- Fulfils the ESD requirements as standard (resistance to ground < 35 megaohms)



### Rubber sole

- Withstands brief exposure to heat of approx. +300 °C
- Long-term flexibility and non-slip properties, even in extremely low temperatures
- Resistant to most chemicals
- Highly abrasion-resistant

- Ergonomically designed tread
- Extremely flexible
- Unique PUR outsole system makes the shoe ultra light
- Excellent shock absorption
- Two-layer system with abrasion-resistant and cut-resistant outsole
- Noticeably improved slip resistance
- Self-cleaning tread
- Antistatic
- Oil and petrol-resistant
- Non-marking

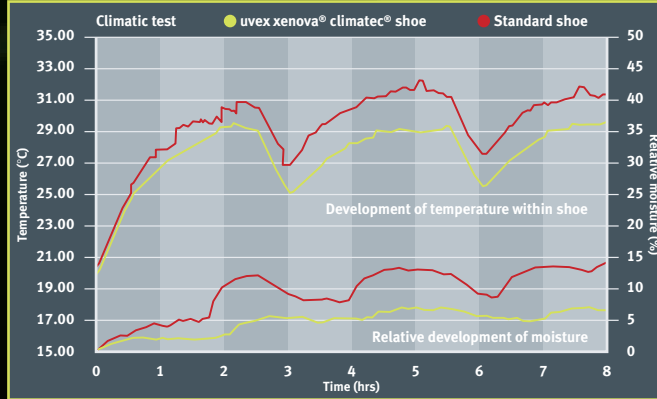
# uvex xenova® climatec®

## Intelligent Material Systems

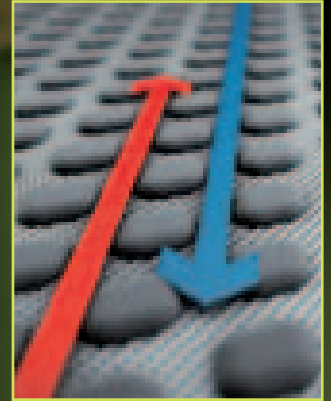
Optimum wearer comfort  
Don't leave comfort to chance.



During intense physical activity, sweat production by the feet amounts to a glass of water by the end of the day. uvex climatec wicks this moisture away reducing the risk of discomfort caused by blisters, fungal infections or even mild hypothermia.



The graph shows that heat generation in the shoe is much lower than in a comparable standard shoe. In comparison there is also a great deal less moisture on the skin, resulting in cooler and dryer feet which equates to greater comfort.



uvex xenova® climatec® – the bamboo fibre liner provides a pleasant feeling when worn.

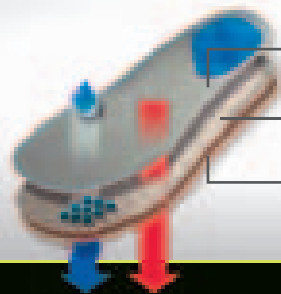
uvex xenova® climatec® footwear



uvex ultra comfortable insole



uvex socks with X-Cross® Technology®



Abrasion-resistant, non-irritating, absorbent textile upper

Absorbent fleece reliably wicks away sweat and moisture

Inlaid copper – anti-static and anti-bacterial



### PROFI PLUS

The light choice: perfect for high seasonal temperatures, this short sock is particularly lightweight. A temperature-regulating yarn compound rapidly wicks moisture from the skin to the outer surface of the sock. The duckbill-shaped foot guard protects the foot from pressure points and skin irritation. Muscles, tendons and joints are protected and stabilised by the LowCut X-Cross® bandage.

**Materials:**  
SkinNODOR® and Mythlan.  
All protectors made from Robur.

See p. 54 for function diagram.

colour	black/grey/lime
--------	-----------------

size	art.-no.
35 - 38	9596.538
39 - 41	9596.541
42 - 44	9596.544
45 - 47	9596.547
48 - 50	9596.550

Material:	
Nylon	79 %
Elastodiene	11 %
Polypropylene	9 %
Elastane	1 %

Technical composition:	
SkinNODOR®	38 %
Robur	25 %
Nylon	17 %
Elastodiene	11 %
Mythlan	9 %



# uvex xenova® climatec®

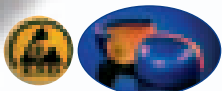
## Intelligent Material Systems



### uvex xenova® climatec® · Shoe 6925 S1

- ultra light, metal-free safety shoe in a sports shoe design
- improved comfort thanks to uvex climatec® with innovative lining featuring bamboo elements
- virtually seamless to eliminate pressure points
- made with textiles – suitable for people allergic to chrome
- uvex xenova® duo toe cap with duo component technology, thermally insulated
- uvex topshield scuffcap to protect the upper and make it last longer
- uvex anti-twist heel cap for greater stability and protection from ankle twisting
- soft padded collar
- uvex hydroflex® GEL for optimal shock absorption in the heel area
- comfortable removable insole, antistatic, with a moisture control system
- fulfils ESD requirements: resistance to ground < 35 megohms
- PUR outsole (see p. 13 for description)

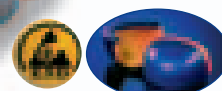
art.-no.	6925.7	6925.8	6925.9
width	10	11	12
standard	EN ISO 20345 S1		
size	35 - 50		



### uvex xenova® climatec® · Shoe 6926 S1

- ultra light, metal-free safety shoe in a sports shoe design
- improved comfort thanks to uvex climatec® with innovative lining featuring bamboo elements
- virtually seamless to eliminate pressure points
- made with textiles – suitable for people allergic to chrome
- uvex xenova® duo toe cap with duo component technology, thermally insulated
- uvex topshield scuffcap to protect the upper and make it last longer
- uvex anti-twist heel cap for greater stability and protection from ankle twisting
- soft padded collar
- uvex hydroflex® GEL for optimal shock absorption in the heel area
- comfortable removable insole, antistatic, with a moisture control system
- fulfils ESD requirements: resistance to ground < 35 megohms
- PUR outsole (see p. 13 for description)

art.-no.	6926.7	6926.8	6926.9
width	10	11	12
standard	EN ISO 20345 S1		
size	35 - 50		



# uvex xenova® air

## Intelligent Material Systems

### uvex xenova® air · Sandals 6912 S1



- metal-free
- innovative design
- attractive, modern colours
- wide sports fit
- very light weight
- uvex climatec® with highly breathable lining and outer materials
- nubuck leather upper
- large perforated surface for good ventilation
- uvex xenova® duo toe cap with duo component technology, thermally insulated
- Velcro strap for individual adjustment
- elastic for a snug fit
- soft padded tongue
- soft padded collar
- new, improved, ultra comfortable removable insole, antistatic, with a moisture control system for superior climate and improved comfort
- the latest generation of uvex hydroflex® GEL for optimal shock absorption in the heel area
- PUR outsole (see p. 13 for description)

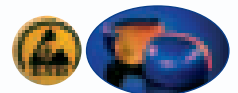
art.-no.	6912.7	6912.8	6912.9
width	10	11	12
standard	EN ISO 20345 S1		
size	35 - 50		



### uvex xenova® air · Shoe 6923 S2

- metal-free
- innovative design
- attractive, modern colours
- wide sports fit
- very light weight
- uvex climatec® with highly breathable lining and outer materials
- nubuck leather upper
- breathable, temperature-regulating uvex PTR textile lining
- uvex xenova® duo toe cap with duo component technology, thermally insulated
- loop lacing system
- newly developed uvex anti-twist heel cap for greater stability and protection from ankle twisting
- soft padded tongue
- soft padded collar
- new, improved, ultra comfortable removable insole, antistatic, with a moisture control system for superior climate and improved comfort
- the latest generation of uvex hydroflex® GEL for optimal shock absorption in the heel area
- PUR outsole (see p. 13 for description)

art.-no.	6923.7	6923.8	6923.9
width	10	11	12
standard	EN ISO 20345 S2		
size	35 - 50		



# uvex xenova® air

## Intelligent Material Systems



### uvex xenova® air · Shoe, perforated 6924 S1

- metal-free
- innovative design
- attractive, modern colours
- wide sports fit
- very light weight
- uvex climatec® with highly breathable lining and outer materials
- nubuck leather upper
- improved perforation for greater breathability
- uvex xenova® duo toe cap with duo component technology, thermally insulated
- loop lacing system
- newly developed uvex anti-twist heel cap for greater stability and protection from ankle twisting
- soft padded tongue
- soft padded collar
- new, improved, ultra comfortable removable insole, antistatic, with a moisture control system for superior climate and improved comfort
- the latest generation of uvex hydroflex® GEL for optimal shock absorption in the heel area
- PUR outsole (see p. 13 for description)

art.-no.	6924.7	6924.8	6924.9
width	10	11	12
standard	EN ISO 20345 S1		
size	35 - 50		

### uvex xenova® air · Lace-up boot, perforated 6943 S1

- metal-free
- innovative design
- attractive, modern colours
- wide sports fit
- very light weight
- uvex climatec® with highly breathable lining and outer materials
- nubuck leather upper
- improved perforation for 20 % more breathability
- slightly modified collar height for less build-up of heat
- uvex xenova® duo toe cap with duo component technology, thermally insulated
- new, improved, ultra comfortable removable insole, antistatic, with a moisture control system for superior climate and improved comfort
- soft padded tongue
- soft padded collar
- loop lacing system
- the latest generation of uvex hydroflex® GEL for optimal shock absorption in the heel area
- PUR outsole (see p. 13 for description)

art.-no.	6943.7	6943.8	6943.9
width	10	11	12
standard	EN ISO 20345 S2		
size	35 - 50		



### uvex xenova® air · Shoe 6927 S1

- metal-free
- innovative design
- wide sports fit
- very light weight
- uvex climatec® with highly breathable lining and outer materials
- high-tech synthetic upper, splashproof
- breathable textile lining
- front of foot completely sealed for splashproof protection
- large perforated surface around sides of heel for good ventilation
- uvex xenova® duo toe cap with duo component technology, thermally insulated
- quick-action plastic fastener with Velcro strap for individual adjustment
- soft padded tongue
- soft padded collar
- new, improved, ultra comfortable removable insole, antistatic, with a moisture control system for superior climate and improved comfort
- the latest generation of uvex hydroflex® GEL for optimal shock absorption in the heel area
- fulfils ESD requirements: resistance to ground < 35 megohms
- PUR outsole (see p. 13 for description)

art.-no.	6927.7	6927.8	6927.9
width	10	11	12
standard	EN ISO 20345 S1		
size	35 - 50		



# uvex xenova® nrj

## Intelligent Material Systems



### uvex xenova® nrj · Sandals 6910 S1/S1P

- very low weight
- uvex climatec® with highly breathable lining and outer materials
- textile upper
- no leather, therefore suitable for people allergic to chrome
- wide sports fit
- uvex xenova® duo toe cap with Duo Component Technology, thermally insulated
- uvex topshield scuffcap to protect the upper and extend its life
- quick-action plastic fastener with Velcro strap for individual adjustment
- soft padded collar
- comfortable removable insole, antistatic, with a moisture control system
- uvex hydroflex® GEL for optimal shock absorption in the heel area
- fulfils ESD requirements: resistance to ground < 35 megohms
- PUR outsole (see p. 13 for description)

art.-no.	6910.7	6910.8	6910.9
width	10	11	12
standard	EN ISO 20345 S1		
size	35 - 50		

art.-no.	6910.1	6910.2	6910.3
width	10	11	12
standard	EN ISO 20345 S1 P		
size	35 - 50		

Flexible, penetration-resistant uvex xenova® midsole exactly matching the width of the insole, does not conduct the cold

### uvex xenova® nrj · Sandals 6911 S1

- very low weight
- uvex climatec® with highly breathable lining and outer materials
- leather upper
- wide sports fit
- uvex xenova® duo toe cap with Duo Component Technology, thermally insulated
- uvex topshield scuffcap to protect the upper and extend its life
- quick-action plastic fastener with Velcro strap for individual adjustment
- soft padded collar
- comfortable removable insole, antistatic, with a moisture control system
- uvex hydroflex® GEL for optimal shock absorption in the heel area
- fulfils ESD requirements: resistance to ground < 35 megohms

- PUR outsole (see p. 13 for description)

art.-no	6911.7	6911.8	6911.9
width	10	11	12
standard	EN ISO 20345 S1		
size	35 - 50		



### uvex xenova® nrj · Shoe, perforated 6921 S1

- metal-free
- very low weight
- uvex climatec® with highly breathable lining and outer materials
- leather upper
- wide sports fit
- uvex xenova® duo toe cap with Duo Component Technology, thermally insulated
- uvex topshield scuffcap to protect the upper and extend its life
- loop lacing system
- uvex anti-twist heel cap for greater stability and protection from ankle twisting
- soft padded collar
- comfortable removable insole, antistatic, with a moisture control system
- uvex hydroflex® GEL for optimal shock absorption in the heel area
- fulfils ESD requirements: resistance to ground < 35 megohms
- PUR outsole (see p. 13 for description)

art.-no.	6921.7	6921.8	6921.9
width	10	11	12
standard	EN ISO 20345 S1		
size	35 - 50		



# uvex xenova® nrj

Intelligent Material Systems



## uvex xenova nrj® - Shoe 6920 S1

- metal-free
- very low weight
- uvex climatic® with highly breathable lining and outer materials
- textile upper
- no leather, therefore suitable for people allergic to chrome
- wide sports fit
- uvex xenova® duo toe cap with Duo Component Technology, thermally insulated
- uvex topshield scuffcap to protect the upper and extend its life
- loop lacing system
- uvex anti-twist heel cap for greater stability and protection from ankle twisting
- soft padded collar
- uvex hydroflex® GEL for optimal shock absorption in the heel area
- comfortable removable insole, antistatic, with a moisture control system
- fulfils ESD requirements: resistance to ground < 35 megohms
- PUR outsole (see p. 13 for description)

art.-no.	6920.7	6920.8	6920.9
width	10	11	12
standard	EN ISO 20345 S1		
size	35 - 50		

## uvex xenova® nrj - Shoe 6922 S2/S3

- metal-free
- very low weight
- uvex climatic® with highly breathable lining and outer materials
- leather upper
- breathable, temperature-regulating uvex PTR textile lining
- wide sports fit
- uvex xenova® duo toe cap with Duo Component Technology, thermally insulated
- uvex topshield scuffcap to protect the upper and extend its life
- loop lacing system
- uvex anti-twist heel cap for greater stability and protection from ankle twisting
- soft padded collar
- uvex hydroflex® GEL for optimal shock absorption in the heel area
- soft padded dust tongue
- comfortable removable insole, antistatic, with a moisture control system
- fulfils ESD requirements: resistance to ground < 35 megohms
- PUR outsole (see p. 13 for description)

art.-no.	6922.7	6922.8	6922.9
width	10	11	12
standard	EN ISO 20345 S2		
size	35 - 50		

art.-no.	6922.1	6922.2	6922.3
width	10	11	12
standard	EN ISO 20345 S3		
size	35 - 50		

Flexible, penetration-resistant uvex xenova® midsole exactly matches the width of the insole, does not conduct the cold



## uvex xenova® nrj - Boot 6940 S2/S3

- metal-free
- very low weight
- uvex climatic® with highly breathable lining and outer materials
- leather upper
- breathable, temperature-regulating uvex PTR textile lining
- wide sports fit
- uvex xenova® duo toe cap with Duo Component Technology, thermally insulated
- uvex topshield scuffcap to protect the upper and extend its life
- loop lacing system
- uvex anti-twist heel cap for greater stability and protection from ankle twisting
- soft padded collar
- uvex hydroflex® GEL for optimal shock absorption in the heel area
- soft padded dust tongue
- comfortable removable insole, antistatic, with a moisture control system
- fulfils ESD requirements: resistance to ground < 35 megohms
- PUR outsole (see p. 13 for description)

art.-no.	6940.7	6940.8	6940.9
width	10	11	12
standard	EN ISO 20345 S2		
size	35 - 50		

art.-no.	6940.1	6940.2	6940.3
width	10	11	12
standard	EN ISO 20345 S3		
size	35 - 50		

Flexible, penetration-resistant uvex xenova® midsole exactly matches the width of the insole, does not conduct the cold



# uvex xenova® pro

Intelligent Material Systems



## uvex xenova® pro · Shoe 6930 S2/S3

- metal-free
- very low weight
- uvex climatec® with highly breathable lining and outer materials
- leather upper
- breathable, temperature-regulating uvex PTR textile lining
- wide sports fit
- uvex xenova® duo toe cap with duo component technology, thermally insulated
- uvex topshield scuffcap to protect the upper and extend its life
- loop lacing system
- uvex anti-twist heel cap for greater stability and protection from ankle twisting
- soft padded collar
- comfortable removable insole, antistatic, with a moisture control system
- uvex hydroflex® GEL for optimal shock absorption in the heel area
- soft padded dust tongue
- PUR outsole (see p. 13 for description)

art.-no.	6930.7	6930.8	6930.9
width	10	11	12
standard	EN ISO 20345 S2		
size	38 - 50		

art.-no.	6930.1	6930.2	6930.3
width	10	11	12
standard	EN ISO 20345 S3		
size	38 - 50		

Flexible, penetration-resistant uvex xenova® midsole exactly matches the width of the insole, does not conduct the cold

## uvex xenova® pro · Boot 6950 S2/S3

- metal-free
- very low weight
- uvex climatec® with highly breathable lining and outer materials
- leather upper
- breathable, temperature-regulating uvex PTR textile lining
- wide sports fit
- uvex xenova® duo toe cap with duo component technology, thermally insulated
- uvex topshield scuffcap to protect the upper and extend its life
- loop lacing system
- uvex anti-twist heel cap for greater stability and protection from ankle twisting
- soft padded collar
- comfortable removable insole, antistatic, with a moisture control system
- uvex hydroflex® GEL for optimal shock absorption in the heel area
- soft padded dust tongue
- PUR outsole (see p. 13 for description)

art.-no.	6950.7	6950.8	6950.9
width	10	11	12
standard	EN ISO 20345 S2		
size	38 - 50		

art.-no.	6950.1	6950.2	6950.3
width	10	11	12
standard	EN ISO 20345 S3		
size	38 - 50		

Flexible, penetration-resistant uvex xenova® midsole exactly matches the width of the insole, does not conduct the cold



# uvex xenova<sup>®</sup> pro

Intelligent Material Systems



## uvex xenova<sup>®</sup> pro · Winter boot 6953 S2/S3

- metal-free
- very low weight
- uvex climatec<sup>®</sup> with highly breathable lining and outer materials
- leather upper
- warm lining
- wide sports fit
- uvex xenova<sup>®</sup> duo toe cap with duo component technology, thermally insulated
- uvex topshield scuffcap to protect the upper and extend its life
- loop lacing system
- uvex anti-twist heel cap for greater stability and protection from ankle twisting
- soft padded collar
- soft padded dust tongue
- comfortable removable insole, antistatic, with a moisture control system
- uvex hydroflex<sup>®</sup> GEL for optimal shock absorption in the heel area
- PUR outsole (see p. 13 for description)

art.-no.	6953.7	6953.8	6953.9
width	10	11	12
standard	EN ISO 20345 S2		
size	38 - 50		

art.-no.	6953.1	6953.2	6953.3
width	10	11	12
standard	EN ISO 20345 S3		
size	38 - 50		

Flexible, penetration-resistant uvex xenova<sup>®</sup> midsole exactly matches the width of the insole, does not conduct the cold

## uvex xenova<sup>®</sup> pro · Winter boot 6952 S3 WR CI HRO

- metal-free
- very low weight
- uvex climatec with highly breathable lining and outer materials
- leather upper
- GORE-TEX<sup>®</sup> warm lining
- wide sports fit
- uvex xenova<sup>®</sup> duo toe cap with duo component technology, thermally insulated
- uvex topshield scuffcap to protect the upper and extend its life
- loop lacing system
- uvex anti-twist heel cap for greater stability and protection from ankle twisting
- soft padded collar
- comfortable removable insole, antistatic, with a moisture control system
- uvex hydroflex<sup>®</sup> GEL for optimal shock absorption in the heel area
- soft padded dust tongue
- flexible, penetration-resistant uvex xenova<sup>®</sup> midsole exactly matches the width of the insole, does not conduct the cold
- PUR outsole (see p. 13 for description)

art.-no.	6952.1	6952.2	6952.3
width	10	11	12
standard	EN ISO 20345 S3 WR CI HRO		
size	38 - 50		



GORE-TEX<sup>®</sup> is a registered trademark of W. L. GORE & Associates.

# uvex motion

## uvex motion · Sandals 6993 S1



- innovative design
- attractive, modern colours
- wide sports fit
- very light weight
- uvex climatec® with highly breathable lining and outer materials
- nubuck leather upper
- large perforated surface for good ventilation
- Velcro strap for individual adjustment
- newly developed uvex anti-twist heel cap for greater stability and protection from ankle twisting
- soft padded collar
- new, improved, ultra comfortable removable insole, antistatic, with a moisture control system for superior climate and improved comfort

- the latest generation of uvex hydroflex® GEL for optimal shock absorption in the heel area

art.-no.	6993.7	6993.8	6993.9
width	10	11	12
standard	EN ISO 20345 S1		
size	36 - 48		

## uvex motion · Shoe 6994 S1

- innovative design
- attractive, modern colours
- wide sports fit
- very light weight
- uvex climatec® with highly breathable lining and outer materials
- nubuck leather upper
- improved perforation for greater breathability
- loop lacing system
- newly developed uvex anti-twist heel cap for greater stability and protection from ankle twisting
- soft padded tongue
- soft padded collar
- new, improved, ultra comfortable removable insole, antistatic, with a moisture control system for superior climate and improved comfort

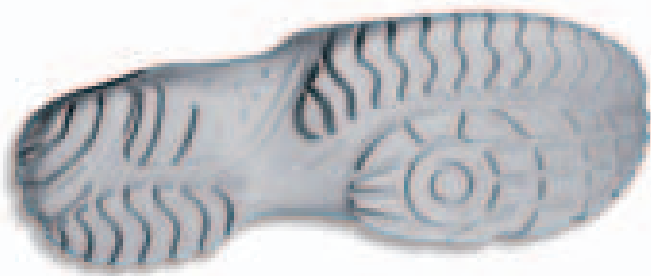
- the latest generation of uvex hydroflex® GEL for optimal shock absorption in the heel area

art.-no.	6994.7	6994.8	6994.9
width	10	11	12
standard	EN ISO 20345 S1		
size	36 - 48		



## uvex motion sole

- free of lacquer wetting inhibitors such as silicones, phthalates, etc.
- fulfils ESD requirements: resistance to ground < 35 megohms
- withstands brief exposure to heat of approx. +120 °C
- ergonomic tread
- highly flexible
- very light weight thanks to unique PU outsole system
- excellent shock absorption
- two-layer system with abrasion-resistant and cut-resistant outsole
- noticeably improved slip resistance
- self-cleaning tread
- antistatic
- oil and petrol-resistant
- non-marking



# uvex motion

## uvex motion · Shoe 6995 S2



- innovative design
- attractive, modern colours
- wide sports fit
- very light weight
- uvex climatec® with highly breathable lining and outer materials
- nubuck leather upper
- loop lacing system
- newly developed uvex anti-twist heel cap for greater stability and protection from ankle twisting
- soft padded tongue
- soft padded collar
- new, improved, ultra comfortable removable insole, antistatic, with a moisture control system for superior climate and improved comfort
- the latest generation of uvex hydroflex® GEL for optimal shock absorption in the heel area

art.-no.	6995.7	6995.8	6995.9
width	10	11	12
standard	EN ISO 20345 S2		
size	36 - 48		

## uvex motion · Lace-up boot, perforated 6992 S1

- innovative design
- attractive, modern colours
- wide sports fit
- very light weight
- uvex climatec® with highly breathable lining and outer materials
- nubuck leather upper
- improved perforation for 20 % more breathability
- slightly modified collar height for less build-up of heat
- loop lacing system
- soft padded tongue
- soft padded collar
- new, improved, ultra comfortable removable insole, antistatic, with a moisture control system for superior climate and improved comfort

- the latest generation of uvex hydroflex® GEL for optimal shock absorption in the heel area

art.-no.	6992.7	6992.8	6992.9
width	10	11	12
standard	EN ISO 20345 S1		
size	36 - 48		



## uvex motion · Shoe 6990 S2



- sporty design
- wide sports fit
- very light weight
- uvex climatec® with highly breathable lining and outer materials
- nubuck leather upper
- newly developed uvex anti-twist heel cap for greater stability and protection from ankle twisting
- soft padded tongue
- soft padded collar
- new, improved, ultra comfortable removable insole, antistatic, with a moisture control system for superior climate and improved comfort
- the latest generation of uvex hydroflex® GEL for optimal shock absorption in the heel area

art.-no.	6990.7	6990.8	6990.9
width	10	11	12
standard	EN ISO 20345 S1		
size	36 - 48		

# uvex athletic gravity zero

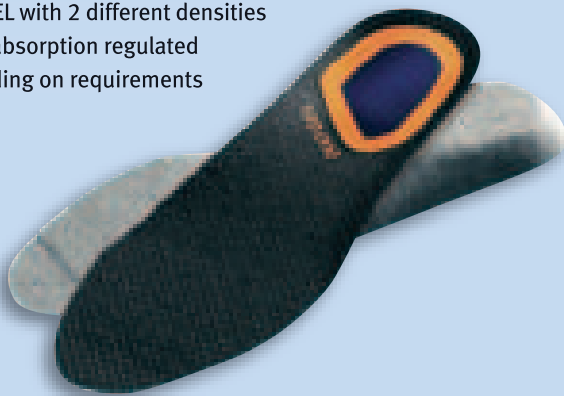
## Technology



### uvex xenova® duo – truly unique features

- comfortable pressure-free fit
- high elasticity and flexibility
- ergonomic shape
- clearly superior to steel and aluminium during tests in accordance with EN 12568
- metal-free
- no electrical or thermal conductivity
- antimagnetic

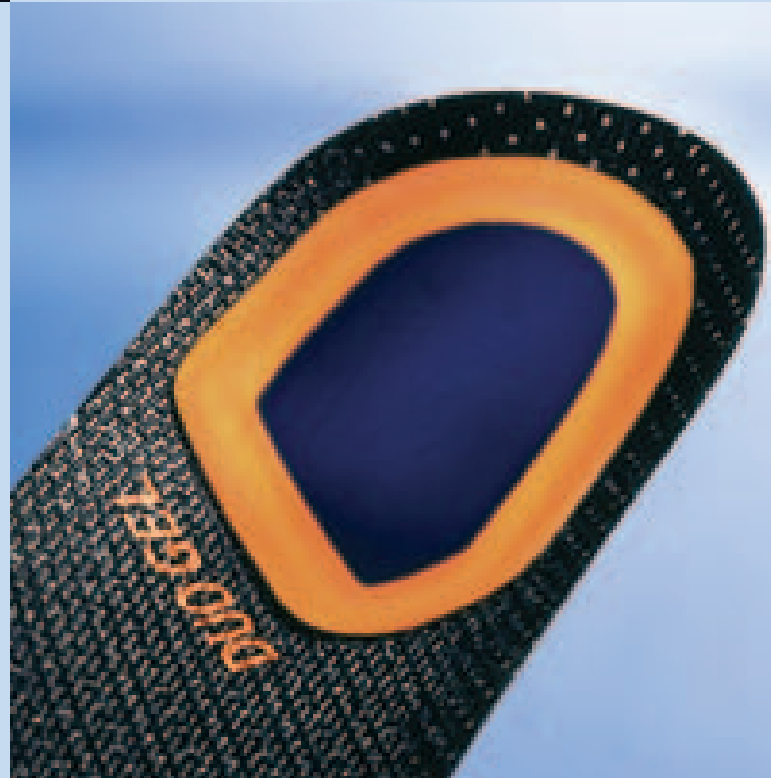
- latest generation of uvex hydroflex® DUO GEL with 2 different densities
- shock absorption regulated depending on requirements



## climatec®

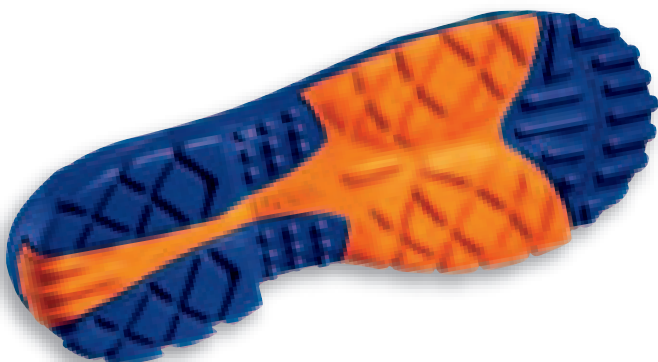
### Measurable improvements in comfort with uvex climatec®

- regulation of individual body temperature
- increased sense of well-being at work
- greater ability to perform tasks
- optimal wearer comfort in any situation



### uvex athletic sole

- double layer consisting of a rubber outsole and shock-absorbent PU midsole
- outstanding comfort underfoot
- antistatic
- self-cleaning tread
- reflector element on toe
- support in arch area for climbing



# uvex athletic gravity zero

## uvex athletic gravity zero · 9464 S2 WR / S3 WR



An ultra modern, waterproof shoe in a completely new design with uvex xenova® duo toecap technology and GORE-TEX® XCR® membrane

- 100 % metal-free
- wide sports fit
- innovative uvex xenova® duo toecap technology in duo component technology with padded covering on the toecap join and interior, plus orthopaedic shape, significantly reduced weight and thermal insulation
- highly breathable, water-repellent nubuck leather upper
- breathable and durably waterproof GORE-TEX® XCR® lining
- uvex topshield scuffcap provides additional protection for the leather upper
- loop lacing system
- soft padded dust tongue
- soft padding on collar
- new, improved, ultra comfortable removable insole, antistatic, with a moisture control system endures a superior climate and improved comfort
- the latest generation of uvex hydroflex® DUO GEL providing optimal shock absorption in heel area

- soft, shock-absorbing PU foam midsole
- two-colour abrasion-resistant non-slip rubber outsole
- reflector element on the toe
- support in the arch area for climbing

These shoes come with a gravity zero shoe bag.

art.-no.	9464.8
standard	EN ISO 20345 S3 WR
size	36 - 48
With the penetration-resistant xenova® midsole	
With a pair of uvex socks with x-Technology Premium 9596.2 (see p. 54/55)	

art.-no.	9466.8
standard	EN ISO 20345 S3 WR
size	36 - 48

## uvex athletic gravity zero · 9465 S2 WR / S3 WR

An ultra modern, waterproof lace-up boot in a completely new design with the uvex xenova® duo toecap technology and GORE-TEX® XCR® membrane

- 100 % metal-free
- wide sports fit
- innovative uvex xenova® duo toecap technology in duo component technology with padded covering on toecap join and interior, plus orthopaedic shape, significantly reduced weight and thermal insulation
- highly breathable, water-repellent nubuck leather upper
- breathable and durably waterproof GORE-TEX® XCR® lining
- uvex topshield scuffcap for additional protection of the leather upper
- loop lacing system
- soft padded dust tongue
- comfortable padding on collar
- new, improved, ultra comfortable removable insole, antistatic, with a moisture control system for superior climate comfort
- the latest generation of uvex hydroflex® DUO GEL for optimal shock absorption in the heel area

- soft, shock-absorbing PU foam midsole
- two-colour abrasion-resistant non-slip rubber outsole
- reflector element on the toe
- support in the arch area for climbing

These shoes come with a gravity zero shoe bag.

art.-no.	9465.8
standard	EN ISO 20345 S3 WR
size	36 - 48
With the penetration-resistant xenova® midsole	
With a pair of uvex socks with x-Technology Premium 9596.2 (see p. 54/55)	

art.-no.	9467.8
standard	EN ISO 20345 S3 WR
size	36 - 48



# uvex athletic



9450.2  
9450.9

9460.9



## uvex athletic · 9450 S1/S1 P · 9460 S1

- Ultra fashionable sandal in a completely new design
- wide sports fit
  - highly breathable nubuck leather upper
  - uvex topshield scuffcap gives additional protection for the leather upper
  - optimal ventilation due to large openings
  - quick-action plastic fastener with Velcro strap for individual adjustment
  - no exposed metal components
  - breathable textile lining
  - soft padding on the collar
  - new, improved, ultra comfortable removable insole, antistatic, with a moisture control system for superior climate and improved comfort
  - the latest generation of uvex hydroflex® GEL for optimal shock absorption in the heel area
  - soft, shock-absorbing PU foam midsole
  - two-colour abrasion-resistant non-slip rubber outsole
  - reflector element on the toe
  - support in the arch area for climbing

art.-no.	9450.9
standard	EN ISO 20345 S1
size	36 - 48

art.-no.	9450.2
standard	EN ISO 20345 S1 P
size	36 - 48
with penetration-resistant xenova® insole	

art.-no.	9460.9
standard	EN ISO 20345 S1
size	36 - 48

## uvex athletic · 9451 S1

An ultra fashionable perforated shoe in a completely new design  
Specifications as for 9450.9, except

- optimal ventilation due to the large perforated surface of the shaft material
- loop lacing system
- leather heel strap

art.-no.	9451.9
standard	EN ISO 20345 S1
size	36 - 48



## uvex athletic sole

- double layer of rubber outsole and shock-absorbing PU midsole
- outstanding comfort
- cut-resistant
- resistant to most acids and alkalis
- outsole is heat-resistant up to +180 °C
- antistatic
- oil and petrol-resistant
- self-cleaning tread
- reflector element on toe
- support in arch area for climbing



# uvex athletic

## uvex athletic · shoe · 9452 S2/S3 · 9462 S2



9452.2  
9452.9

9462.9



climatec®

An ultra fashionable shoe in a completely new design

- wide sports fit
- highly breathable, water-repellent nubuck leather upper
- uvex topshield scuffcap provides additional protection for the leather upper
- loop lacing system
- no exposed metal components
- breathable, temperature-balancing uvex PTR textile lining
- leather heel strap
- soft padded dust tongue
- soft padding on the collar
- new, improved, ultra comfortable removable insole, antistatic, with a moisture control system for superior climate and improved comfort
- soft, shock-absorbing PU foam midsole
- the latest generation of uvex hydroflex® GEL for optimal shock absorption in the heel area
- two-colour abrasion-resistant non-slip rubber outsole
- reflector element on the toe
- support in the arch area for climbing

art.-no.	9452.9
standard	EN ISO 20345 S2
size	36 - 48

art.-no.	9452.2
standard	EN ISO 20345 S3
size	36 - 48
with penetration-resistant xenova® insole	

art.-no.	9462.9
standard	EN ISO 20345 S2
size	36 - 48

## uvex athletic · boot · 9453 S2

Ultra fashionable lace-up boot in a completely new design

- wide sports fit
- highly breathable, water-repellent nubuck leather upper
- uvex topshield scuffcap for additional protection of the leather upper
- loop lacing system
- no exposed metal components
- breathable, temperature-balancing uvex PTR textile lining
- leather heel strap
- comfortable padding on the collar
- soft padded dust tongue
- new, improved, ultra comfortable removable insole, antistatic, with a moisture control system for superior climate and improved comfort
- the latest generation of uvex hydroflex® GEL for optimal shock absorption in the heel area
- soft, shock-absorbing PU foam midsole
- two-colour abrasion-resistant non-slip rubber outsole
- reflector element on the toe
- support in the arch area for climbing

art.-no.	9453.9
standard	EN ISO 20345 S2
size	36 - 48



climatec®

# uvex motorsport

## uvex motorsport · 9492 S1

An ultra modern lace-up boot with a motor sports look

- fashionable fit
- highly breathable and flexible nappa leather upper
- breathable textile lining
- combination of an asymmetric loop lacing system for a particularly ergonomic fit and Velcro fastening in the collar area
- comfortable padding on the collar and tongue
- new, improved, ultra comfortable removable insole, antistatic, with a moisture control system for superior climate and improved comfort
- reflector application for enhanced safety
- the latest generation of uvex hydroflex® DUO GEL providing optimal shock absorption in the heel area
- soft, shock-absorbing midsole
- exceptionally flexible abrasion-resistant non-slip rubber outsole

art.-no.	9492.9
standard	EN ISO 20345 S1
size	36-48



## uvex motorsport sole

- outsole made from nitrile rubber
- outstanding comfort
- non-slip
- abrasion-resistant
- highly cut-resistant
- the outsole is heat-resistant for brief exposure up to +180 °C
- antistatic
- oil and petrol-resistant
- resistant to most acids and alkalis



# uvex motorsport



## uvex motorsport · 9496 01/S1



- Ultra modern shoe with a motor sports look
- fashionable fit
  - highly breathable and flexible nappa leather upper
  - breathable textile lining
  - extra long lacing area for greater adaptability to individual foot shapes
  - comfortable padding on the shaft and tongue
  - new, improved, ultra comfortable removable insole, antistatic, with a moisture control system ensures a superior climate and improved comfort
  - the latest generation of uvex hydroflex® DUO GEL provides for optimal shock absorption in the heel area
  - reflector application for enhanced safety

- soft, shock-absorbing midsole
- exceptionally flexible abrasion-resistant non-slip rubber outsole

art.-no.	9496.1
standard	EN ISO 20347 01
size	36 - 48
Occupational shoe without toecap	

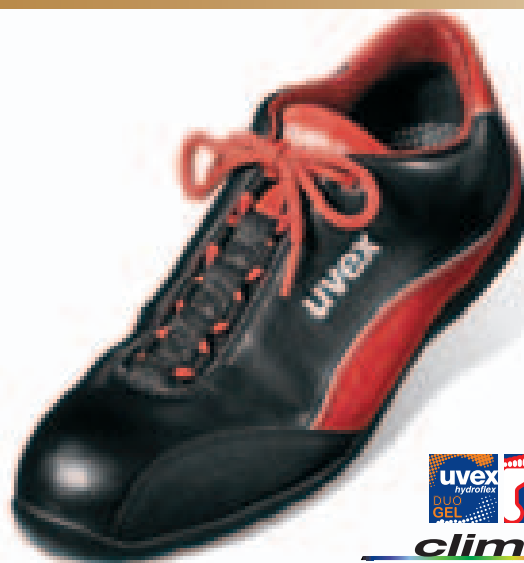
art.-no.	9496.9
standard	EN ISO 20345 S1
size	36 - 48

## uvex motorsports · 9494 S1

- Ultra modern shoe with a motor sports look
- fashionable fit
  - highly breathable and flexible nappa leather upper
  - breathable textile lining
  - extra long lacing area for greater adaptability to individual foot shapes
  - comfortable padding on the shaft and tongue
  - new, improved, ultra comfortable removable insole, antistatic, with a moisture control system ensures a superior climate and improved comfort
  - the latest generation of uvex hydroflex® DUO GEL provides for optimal shock absorption in the heel area
  - reflector application for enhanced safety

- soft, shock-absorbing midsole
- exceptionally flexible abrasion-resistant non-slip rubber outsole

art.-no.	9494.9
standard	EN ISO 20345 S1
size	36 - 48



## uvex motorsport · 9495 S1



- Ultra modern shoe with a motor sports look
- fashionable fit
  - highly breathable and flexible velours leather upper
  - breathable textile lining
  - extra long lacing area for greater adaptability to individual foot shapes
  - comfortable padding on the shaft and tongue
  - new, improved, ultra comfortable removable insole, antistatic, with a moisture control system ensures a superior climate and improved comfort
  - the latest generation of uvex hydroflex® DUO GEL provides for optimal shock absorption in the heel area

- reflector application for enhanced safety
- soft, shock-absorbing midsole
- exceptionally flexible abrasion-resistant non-slip rubber outsole

art.-no.	9495.9
standard	EN ISO 20345 S1
size	36 - 48

# uvex module 2000

## softgrip



### uvex module 2000 · 8633 S1/S1 P

- Innovative high-quality sandal
- wide sports fit
  - water repellent nappa leather
  - uvex topshield scuffcap to protect leather upper
  - functional quick-action fastening
  - reflector application for enhanced safety
  - breathable textile lining, kind to skin
  - new, improved, ultra comfortable removable insole, antistatic, with a moisture control system ensuring a superior climate and improved comfort

- latest generation of uvex hydroflex® GEL for optimal shock absorption in the heel area
- innovative dual softgrip outsole made from reactive elastomer

art.-no.	8633.9
standard	EN ISO 20345 S1
size	38 - 48

art.-no.	8633.2
standard	EN ISO 20345 S1 P
size	38 - 48
but with steel midsole	

### uvex module 2000 · 8634 S2/S3

- Innovative high-quality shoe
- wide sports fit
  - water repellent nappa leather
  - uvex topshield scuffcap to protect leather upper
  - loop lacing system
  - reflector application for enhanced safety
  - breathable textile lining, kind to skin
  - dust tongue
  - new, improved, ultra comfortable removable insole, antistatic, with a moisture control system ensuring a superior climate and improved comfort

- latest generation of uvex hydroflex® GEL for optimal shock absorption in the heel area
- innovative dual softgrip outsole made from reactive elastomer

art.-no.	8634.9
standard	EN ISO 20345 S2
size	38 - 48

art.-no.	8634.2
standard	EN ISO 20345 S3
size	38 - 48
but with steel midsole	



### uvex module 2000 · 8635 S2/S3

- Innovative high-quality ankle boot
- wide sports fit
  - water repellent nappa leather
  - uvex topshield scuffcap to protect leather upper
  - anatomical flexzone in Achilles heel area
  - loop lacing system
  - reflector application for enhanced safety
  - breathable textile lining, kind to skin
  - dust tongue
  - new, improved, ultra comfortable removable insole, antistatic, with a moisture control system ensuring a superior climate and improved comfort

- latest generation of uvex hydroflex® GEL for optimal shock absorption in the heel area
- innovative dual softgrip outsole made from reactive elastomer

art.-no.	8635.9
standard	EN ISO 20345 S2
size	38 - 48

art.-no.	8635.2
standard	EN ISO 20345 S3
size	38 - 48
but with steel midsole	



### uvex module 2000 softgrip sole

- duo softgrip sole with pioneering tread design made from reactive elastomer, highly effective in preventing slipping
- outstanding comfort due to soft midsole that ensures optimal energy absorption in heel area and excellent cushioning in front section
- abrasion-resistant
- outsole is heat-resistant to +120° C
- antistatic
- oil and petrol-resistant
- self-cleaning tread



# uvex module 2000

## softgrip



### uvex module 2000 · 8654 S1

A low weight and comfortable sandal in an attractive new design

- wide sports fit
- sturdy full-grain leather
- breathable textile lining
- metal buckle
- reflector strips for enhanced safety
- new, improved, ultra comfortable removable insole, antistatic, with a moisture control system endures a superior climate and improved comfort
- the latest generation of uvex hydroflex® GEL for optimal shock absorption in the heel area
- innovative dual softgrip outsole made from reactive elastomer

art.-no.	8654.9
standard	EN ISO 20345 S1
size	38 - 50

### uvex module 2000 · 8655 S2

Innovative and comfortable sport-style shoe in an attractive new design

- wide sports fit
- sturdy water-repellent full-grain leather
- padded collar
- reflector strips for enhanced safety
- breathable textile lining
- padded dust tongue
- new, improved, ultra comfortable removable insole, antistatic, with a moisture control system endures a superior climate and improved comfort
- the latest generation of uvex hydroflex® GEL for optimal shock absorption in the heel area
- innovative dual softgrip outsole made from reactive elastomer

art.-no.	8655.9
standard	EN ISO 20345 S2
size	38 - 50



### uvex module 2000 · 8656 S2

An innovative and comfortable sport-style ankle boot in an attractive new design

- wide sports fit
- sturdy water-repellent full-grain leather
- padded collar
- reflector strips for enhanced safety
- breathable textile lining
- padded dust tongue
- new, improved, ultra comfortable removable insole, antistatic, with a moisture control system endures a superior climate and improved comfort
- the latest generation of uvex hydroflex® GEL for optimal shock absorption in the heel area
- an innovative dual softgrip outsole made from reactive elastomer

art.-no.	8656.9
standard	EN ISO 20345 S2
size	38 - 50



# uvex module ladies

litegrip



## uvex module ladies · 8670 S1

Innovative and high-quality ladies sport-style sandal

- sports fit
- nubuck leather upper
- functional Velcro fastening
- breathable textile lining
- new, improved, ultra comfortable removable insole, antistatic, with a moisture control system ensuring a superior climate and improved comfort
- latest generation of uvex hydroflex® GEL for optimal shock absorption in the heel area
- innovative litegrip outsole made from reactive elastomer

art.-no.	8670.9
standard	EN 345-1 · S1
size	35 - 42

## uvex module ladies · 8671 S2

Innovative, modern, high-quality ladies shoe

- sports fit
- water repellent nubuck leather upper
- functional loop lacing system
- soft padding on collar
- breathable textile lining
- new, improved, ultra comfortable removable insole, antistatic, with a moisture control system ensuring a superior climate and improved comfort
- latest generation of uvex hydroflex® GEL for optimal shock absorption in the heel area

- innovative litegrip outsole made from reactive elastomer

art.-no.	8671.9
standard	EN 345-1 · S2
size	35 - 42



## uvex module lady · 8678 S1

Innovative and high-quality ladies' sports-style slip-on sandal

- sports fit
- nubuck leather upper
- breathable textile lining
- new, improved, ultra comfortable removable insole, antistatic, with a moisture control system endures a superior climate and improved comfort
- the latest generation of uvex hydroflex® GEL for optimal shock absorption in heel area
- innovative litegrip outsole made from reactive elastomer

art.-no.	8678.9
standard	EN ISO 20345 S1
size	35 - 42



## uvex module ladies litegrip sole

- mono litegrip sole made from reactive elastomer to prevent slipping
- outstanding comfort due to lightweight material and excellent shock absorption
- abrasion-resistant
- outsole is heat-resistant to +120° C
- antistatic
- oil and petrol-resistant
- self-cleaning tread



# uvex module ladies

## softgrip



### uvex module ladies · 8675 S2

Innovative and fashionable, high-quality ladies' shoe

- sports fit
- water-resistant nappa leather
- functional loop lacing system
- padded collar
- breathable textile lining
- new, improved, ultra comfortable removable insole, antistatic, with a moisture control system ensuring a superior climate and improved comfort
- latest generation of uvex hydroflex® GEL for optimal shock absorption in the heel area
- innovative dual softgrip sole made from reactive elastomer

art.-no.	8675.9
standard	EN 345-1 · S2
size	35 - 42



### uvex module ladies · 8676 S2

Innovative and fashionable, high-quality ladies' ankle boot

- sports fit
- water-resistant nappa leather
- loop lacing system with hooks
- padded collar
- breathable textile lining
- new, improved, ultra comfortable removable insole, antistatic, with a moisture control system ensuring a superior climate and improved comfort
- latest generation of uvex hydroflex® GEL for optimal shock absorption in the heel area
- innovative dual softgrip sole made from reactive elastomer

art.-no.	8676.9
standard	EN 345-1 · S2
size	35 - 42



### uvex module ladies softgrip sole

- duo softgrip sole with pioneering tread design made from reactive elastomer, highly effective in preventing slipping
- outstanding comfort due to soft midsole that ensures optimal energy absorption in heel area and excellent cushioning in front section
- abrasion-resistant
- outsole is heat-resistant to +120° C
- antistatic
- oil and petrol-resistant
- self-cleaning tread



# uvex lady sports



## uvex lady sports · 9486 S1

Fashionable ladies' shoe

- sporty fit
- highly breathable and flexible nappa leather upper
- breathable textile lining
- comfortable padding on tongue and collar
- vamp and tongue perforated for additional ventilation
- new, improved, ultra comfortable removable insole, antistatic, with a moisture control system for superior climate and improved comfort
- the latest generation of uvex hydroflex® GEL for optimal shock absorption in the heel area
- abrasion-resistant, non-slip rubber outsole for general use

art.-no.	9486.9
standard	EN ISO 20345 S1
size	35 - 42

## uvex lady sports · 9487 S1

Fashionable ladies' shoe

- sporty fit
- highly breathable and flexible nappa leather upper
- breathable textile lining
- comfortable padding on tongue and collar
- vamp and tongue perforated for additional ventilation
- new, improved, ultra comfortable removable insole, antistatic, with a moisture control system for superior climate and improved comfort
- the latest generation of uvex hydroflex® GEL for optimal shock absorption in the heel area
- abrasion-resistant, non-slip rubber outsole for general use

art.-no.	9487.9
standard	EN ISO 20345 S1
size	35 - 42



## uvex lady sports sole

- made of nitrile rubber
- extremely comfortable underfoot
- non-slip
- abrasion-resistant
- highly cut-resistant
- outsole is heat-resistant for brief exposure up to +180 °C
- antistatic
- oil and petrol-resistant
- highly acid and alkali-resistant
- stylish design



# uvex lady sports



## uvex lady sports · 9488 S1

Fashionable ladies' shoe

- sporty fit
- highly breathable and flexible nubuck leather upper
- breathable textile lining
- comfortable padding on tongue and collar
- vamp and tongue perforated for additional ventilation
- new, improved, ultra comfortable removable insole, antistatic, with a moisture control system for superior climate and improved comfort
- the latest generation of uvex hydroflex® GEL for optimal shock absorption in the heel area
- abrasion-resistant, non-slip rubber outsole for general use

art.-no.	9488.9
standard	EN ISO 20345 S1
size	35 - 42



## uvex lady sports · 9489 S1

Fashionable ladies' shoe

- sporty fit
- highly breathable and flexible nappa leather upper
- breathable textile lining
- comfortable padding on tongue and collar
- vamp and tongue perforated for additional ventilation
- new, improved, ultra comfortable removable insole, antistatic, with a moisture control system for superior climate and improved comfort
- the latest generation of uvex hydroflex® GEL for optimal shock absorption in the heel area
- abrasion-resistant, non-slip rubber outsole for general use

art.-no.	9489.9
standard	EN ISO 20345 S1
size	35 - 42



# uvex ESD



## uvex module 1000 · 8644/4 S1

Lightweight and comfortable ESD sandal in an attractive new design

- wide sports fit
- sturdy full-grain leather
- breathable textile lining
- metal buckle
- reflector strips for enhanced safety
- new, improved, ultra comfortable removable insole, antistatic, with a moisture control system endures a superior climate and improved comfort

- the latest generation of uvex hydroflex® GEL for optimal shock absorption in the heel area
- fulfils ESD requirements: resistance to ground < 35 megohms
- innovative module litegrip outsole made from reactive elastomer

art.-no.	8644,4
standard	EN ISO 20345 S1
size	38 - 48

## uvex module 1000 · 8645/4 S2

Innovative and comfortable sport-style ESD shoe in an attractive new design

- wide sports fit
- sturdy water-repellent full-grain leather
- padded collar
- reflector strips for enhanced safety
- breathable textile lining
- padded dust tongue
- new, improved, ultra comfortable removable insole, antistatic, with a moisture control system endures a superior climate and improved comfort

- the latest generation of uvex hydroflex® GEL for optimal shock absorption in the heel area
- fulfils ESD requirements: resistance to ground < 35 megohms
- innovative module litegrip outsole made from reactive elastomer

art.-no.	8645,4
standard	EN ISO 20345 S2
size	38 - 48



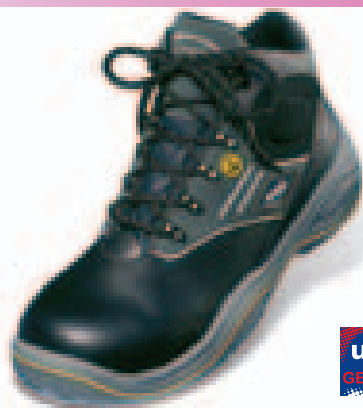
## uvex module 1000 · 8646/4 S2

Innovative and comfortable sport-style ESD ankle boot in an attractive new design

- wide sports fit
- sturdy water-repellent full-grain leather
- padded collar
- reflector strips for enhanced safety
- breathable textile lining
- padded dust tongue
- the latest generation of uvex hydroflex® GEL for optimal shock absorption in the heel area

- new, improved, ultra comfortable removable insole, antistatic, with a moisture control system endures a superior climate and improved comfort
- fulfils ESD requirements: resistance to ground < 35 megohms
- innovative module litegrip outsole made from reactive elastomer

art.-no.	8646,4
standard	EN ISO 20345 S2
size	38 - 48



## Electrostatic

Controlling undesired electrostatic charge is assuming an increasingly important role in industry. More and more employees come into contact with processes, materials or objects which are sensitive to electrostatic. It is often necessary to use safety shoes as part of a system to conduct electrostatic charge in such workplaces.

Independent of various measuring methods, volume resistance between 750 kilohms (7.5 \* 10<sup>5</sup> ohms) and 35 megohms (3.5 \* 10<sup>7</sup> ohms) is still required to fulfil the various relevant norms (e.g. EN 344-1, EN 345-1, EN ISO 20345, EN 61340).

With the new uvex module ESD range, uvex offers a collection of men's and women's shoes for use in such situations.

### Volume resistance in accordance

↑ ESD (acc. EN 61340-5-1) ↓ Antistatic (acc. EN 344-1/345-1, EN ISO 20345) ↓	<b>Low resistance</b>	10 <sup>3</sup>	1 - 9 Kiloohm
	(conductive)	10 <sup>4</sup>	10 - 99 Kiloohm
		10 <sup>5</sup>	100 - 749 Kiloohm
		10 <sup>5</sup>	750 - 999 Kiloohm
		10 <sup>6</sup>	1 - 9 Megaohm
		10 <sup>7</sup>	10 - 35 Megaohm
		10 <sup>7</sup>	36 - 99 Megaohm
		10 <sup>8</sup>	100 - 999 Megaohm
		10 <sup>9</sup>	< 1 Gigaohm
	<b>High resistance</b>	10 <sup>9</sup>	1 - 9 Gigaohm
	(insulating)	10 <sup>10</sup>	10 - 99 Gigaohm
	10 <sup>11</sup>	100 - 999 Gigaohm	

# uvex ESD

More ESD shoes on pages 15 - 19 and 22 - 23.



## uvex module ESD · 8617/4 S1

Functional sport-style ESD shoe

- wide sports fit
- nubuck leather upper
- large perforated surface for superb ventilation
- reflector strips for enhanced safety
- breathable textile lining
- new, improved, ultra comfortable removable insole, antistatic, with a moisture control system ensuring a superior climate and improved comfort
- latest generation of uvex hydroflex® GEL for optimal shock absorption in the heel area

- fulfils ESD requirements: resistance to ground < 35 megohms
- innovative litegrip sole made from reactive elastomer

art.-no.	8617.4
standard	EN 345-1 · S1
size	35 - 50

## uvex module ESD · 8670/4 S1

Innovative and high-quality ladies sport-style ESD sandal

- sports fit
- nubuck leather upper
- breathable textile lining
- new, improved, ultra comfortable removable insole, antistatic, with a moisture control system ensuring a superior climate and improved comfort
- latest generation of uvex hydroflex® GEL for optimal shock absorption in the heel area
- fulfils ESD requirements: resistance to ground < 35 megohms

- innovative litegrip sole made from reactive elastomer

art.-no.	8670.4
standard	EN 345-1 · S1
size	35 - 42



## uvex module ESD · 8671/4 S2

Innovative, modern, high-quality ESD ladies shoe

- sports fit
- water repellent nubuck leather upper
- functional loop lacing system
- soft padding on collar
- breathable textile lining
- new, improved, ultra comfortable removable insole, antistatic, with a moisture control system ensuring a superior climate and improved comfort
- latest generation of uvex hydroflex® GEL for optimal shock absorption in the heel area

- fulfils ESD requirements: resistance to ground < 35 megohms
- innovative litegrip sole made from reactive elastomer

art.-no.	8671.4
standard	EN 345-1 · S2
size	35 - 42



## uvex office ESD · 9541/4 S1

Office shoe in the classic English style shape with brogue design

- comfortable fit
- supple full-grain leather upper
- breathable lining
- ultra comfortable insole with hydroflex® GEL shock absorption system
- fulfils ESD requirements: resistance to ground < 35 megohms
- nitrile rubber sole

art.-no.	9541.4
standard	EN ISO 20345 S1
size	38 - 47



# uvex origin



### uvex ultragrip

This all-new sole has excellent material properties that enable the uvex origin to cope with the most varied of floors. With its innovative shell construction, it offers the softcell midsole and optimum protection against heat, cold and chemicals.



### Guaranteed protection from heat/cold in accordance with EN ISO 20345

Boiling hot or ice-cold – with uvex origin, extreme temperatures are no problem. Due to its special rubber sole it provides reliable protection against heat and cold. Quality products from uvex that are endorsed by the quality marks of recognised testing procedures.



### uvex softcell

The ultra comfortable softcell midsole made from foamed polyurethane ensures optimal shock absorption on hard surfaces. The shell construction of the sole offers all-round protection. Some models are available with a steel midsole.



The outsole is heat-resistant for brief exposure in accordance with EN ISO 20345



Heat-insulating finish in accordance with EN ISO 20345

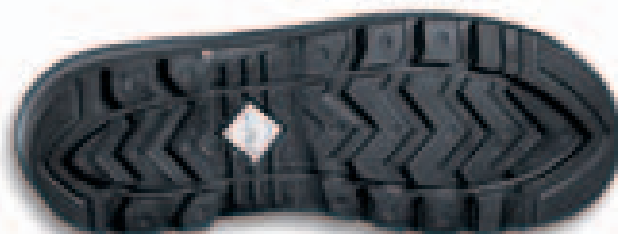


Cold-insulating finish in accordance with EN ISO 20345



### uvex origin sole

- dual sole made from uvex softcell midsole material for excellent shock absorption and comfort underfoot, and uvex ultragrip outsole made from a newly developed rubber blend
- the uvex ultragrip outsole is shaped like a shell that almost encloses the softcell midsole and offers optimal protection against external heat, cold and chemicals
- outsole is heat-resistant to +300 °C
- suitable for general use on almost all surfaces in a very broad range of temperatures from -20 °C to +300 °C
- resistant to most chemicals
- very good slip prevention, even on damp and oily surfaces
- silicone-free
- extremely cut-resistant
- very low abrasion
- antistatic
- self-cleaning tread



# uvex origin 3000



## uvex origin · 8454 S2 CI HI HRO / S3 CI HI HRO

Modern and sturdy winter boot

- extra wide fit
- water-resistant nappa leather
- dust tongue
- uvex topshield scuff cap to protect the leather upper
- breathable, temperature-regulating uvex PTR textile lining
- innovative combination of traditional lacing and a zip fastener for quick changing
- new, improved, ultra comfortable removable insole, antistatic, with a moisture control system ensuring a superior climate and improved comfort
- latest generation of uvex hydroflex® GEL for optimal shock absorption in the heel area
- HI symbol for heat-insulating sole in accordance with EN ISO 20345
- CI symbol for cold-insulating sole in accordance with EN ISO 20345
- HRO symbol for heat-resistant outsole for brief exposure up to +300 °C in accordance with EN ISO 20345
- dual sole made from uvex softcell midsole material for excellent shock absorption and comfort underfoot, and uvex ultragrip outsole made from a newly developed rubber blend
- the uvex ultragrip outsole is shaped like a shell that almost encloses the softcell midsole and offers optimal protection against external heat, cold and chemicals

art.-no.	8454.9
standard	EN ISO 20345 · S2 CI HI HRO
size	38 - 48

art.-no.	8454.2
standard	EN ISO 20345 · S3 CI HI HRO
size	38 - 48
but with steel midsole	



# uvex origin 2000



## uvex origin · 8450 S2 CI HI HRO / S3 CI HI HRO

Sturdy shoe suitable for general use

- extra wide fit
- water-resistant nappa leather
- dust tongue
- breathable Cambrelle lining
- new, improved, ultra comfortable removable insole, antistatic, with a moisture control system ensuring a superior climate and improved comfort
- latest generation of uvex hydroflex® GEL for optimal shock absorption in the heel area
- HI symbol for heat-insulating sole in accordance with EN 345-1
- CI symbol for cold-insulating sole in accordance with EN 345-1
- HRO symbol for heat-resistant outsole for brief exposure up to +300 °C in accordance with EN 345-1
- dual sole made from uvex softcell midsole material for excellent shock absorption and comfort underfoot, and uvex ultragrip outsole made from a newly developed rubber blend
- the uvex ultragrip outsole is shaped like a shell that almost encloses the softcell midsole and offers optimal protection against external heat, cold and chemicals

art.-no.	8450.9
standard	EN 345-1 · S2 CI HI HRO
size	38 - 48

art.-no.	8450.2
standard	EN 345-1 · S3 CI HI HRO
size	38 - 48
but with steel midsole	



## uvex origin · 8451 S2 CI HI HRO / S3 CI HI HRO

Sturdy lace-up boot suitable for general use

- extra wide fit
- water-resistant nappa leather
- dust tongue
- breathable textile lining
- new, improved, ultra comfortable removable insole, antistatic, with a moisture control system ensuring a superior climate and improved comfort
- latest generation of uvex hydroflex® GEL for optimal shock absorption in the heel area
- HI symbol for heat-insulating sole in accordance with EN 345-1
- CI symbol for cold-insulating sole in accordance with EN 345-1
- HRO symbol for heat-resistant outsole for brief exposure up to +300 °C in accordance with EN 345-1
- dual sole made from uvex softcell midsole material for excellent shock absorption and comfort underfoot, and uvex ultragrip outsole made from a newly developed rubber blend
- the uvex ultragrip outsole is shaped like a shell that almost encloses the softcell midsole and offers optimal protection against external heat, cold and chemicals

art.-no.	8451.9
standard	EN 345-1 · S2 CI HI HRO
size	38 - 48

art.-no.	8451.2
standard	EN 345-1 · S3 CI HI HRO
size	38 - 48
but with steel midsole	



# uvex origin 1000

## uvex origin · 8463 S2 HI HRO

- Innovative, functional and robust welding boot
- extra wide fit
  - sturdy water-repellent full-grain leather
  - laces protected by tongue
  - uvex topshield scuffcap for additional protection of the leather upper
  - hard-wearing and breathable textile lining
  - new, improved, ultra comfortable removable insole, antistatic, with a moisture control system endures a superior climate and improved comfort
  - the latest generation of uvex hydroflex® GEL for optimal shock absorption in the heel area
  - heat-insulating sole (HI symbol) in accordance with EN 345-1

- heat-resistant sole for brief exposure up to +300 °C (HRO symbol) in accordance with EN 345-1
- PU/rubber outsole with excellent shock absorption properties and high resistance to external heat, cold and chemicals

art.-no.	8463.9
standard	EN ISO 20345 S2 HI HRO
size	38 - 48



## uvex origin · 8464 S2 HI HRO

- Functional and robust welding/foundry boot with quick-action fastening
- extra wide fit
  - sturdy water-repellent full-grain leather
  - heat-resistant stitching
  - leather scuffcap reinforced with carbon to protect the upper
  - hard-wearing leather lining
  - new, improved, ultra comfortable removable insole, antistatic, with a moisture control system endures a superior climate and improved comfort
  - the latest generation of uvex hydroflex® GEL for optimal shock absorption in the heel area
  - heat-insulating sole (HI symbol) in accordance with EN ISO 20345

- heat-resistant sole for brief exposure up to +300 °C (HRO symbol) in accordance with EN ISO 20345
- PU/rubber outsole with excellent shock absorption properties and high resistance to external heat, cold and chemicals

art.-no.	8464.9
standard	EN ISO 20345 S2 HI HRO
size	38 - 48



## uvex origin · 8465 S2 HI HRO

- Functional and robust foundry boot
- extra wide fit
  - sturdy water-repellent full-grain leather
  - pleated tongue the at rear for quick changing
  - functional quick-action fastening
  - heat-resistant stitching
  - leather scuffcap reinforced with carbon to protect the upper
  - hard-wearing leather lining
  - ultra comfortable removable insole, antistatic, with a moisture control system
  - heat-insulating sole (HI symbol) in accordance with EN ISO 20345
  - heat-resistant sole for brief exposure up to + 300 °C (HRO symbol) in accordance with EN ISO 20345

- dual sole made from uvex softcell midsole material for excellent shock absorption and comfort underfoot, and uvex ultragrip outsole made from a newly developed rubber blend
- the uvex ultragrip outsole is shaped like a shell that almost encloses the softcell midsole and offers optimal protection against external heat, cold and chemicals

art.-no.	8465.0
standard	EN ISO 20345 S2 HI HRO
size	38 - 48



# uvex performance



## uvex performance · 9581 S2 / S3

Extra wide, functional, naturally shaped shoe

- extremely wide fit
- water repellent nubuck leather upper
- scratch-resistant scuffcap, reinforced with carbon
- soft breathable mesh inserts
- loop lacing system
- breathable textile lining
- new, improved, ultra comfortable removable insole, antistatic, with a moisture control system ensuring a superior climate and improved comfort
- latest generation of uvex hydroflex® GEL for optimal shock absorption in the heel area
- naturally shaped mono PU sole

art.-no.	9581.2
standard	EN ISO 20345 S3
size	38 - 47
but with steel midsole	

art.-no.	9581.9
standard	EN ISO 20345 S2
size	38 - 48

## uvex performance · 9582 S2 / S3

Extra wide, functional, naturally shaped ankle boot

- extremely wide fit
- water repellent nubuck leather upper
- scratch-resistant scuffcap, reinforced with carbon
- soft breathable mesh inserts
- loop lacing system
- breathable textile lining
- new, improved, ultra comfortable removable insole, antistatic, with a moisture control system ensuring a superior climate and improved comfort
- latest generation of uvex hydroflex® GEL for optimal shock absorption in the heel area
- naturally shaped mono PU sole

art.-no.	9582.2
standard	EN ISO 20345 S3
size	38 - 47
but with steel midsole	

art.-no.	9582.9
standard	EN ISO 20345 S2
size	38 - 47



## uvex performance PUR sole

- naturally shaped sole made from mono-polyurethane
- extremely comfortable underfoot
- anti-slip
- abrasion-resistant
- outsole is heat-resistant to +120 °C
- antistatic
- oil and petrol-resistant
- self-cleaning tread



# uvex trekking



## uvex trekking · 9592 S3

Extra wide and high-quality ankle trekking boot with uvex xenova® toecap technology

- wide sports fit
- innovative, orthopaedically shaped uvex xenova® toecap technology with insulating properties and significantly reduced weight
- water-repellent leather upper
- reflector strips for enhanced safety
- scratch-resistant scuffcap, reinforced with carbon
- constructed like a climbing boot
- dust tongue
- breathable textile lining
- full, ultra comfortable removable insole with uvex hydroflex® GEL shock absorption system
- rubber trekking sole with climbing tread
- innovative, flexible, penetration-resistant uvex xenova® midsole exactly matches the width of the insole, does not conduct the cold

art.-no.	9592.8
standard	EN 345-1 · S3
size	36 - 48

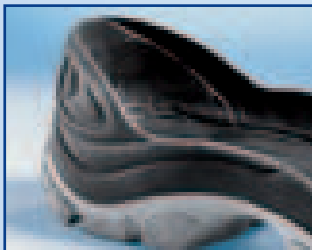
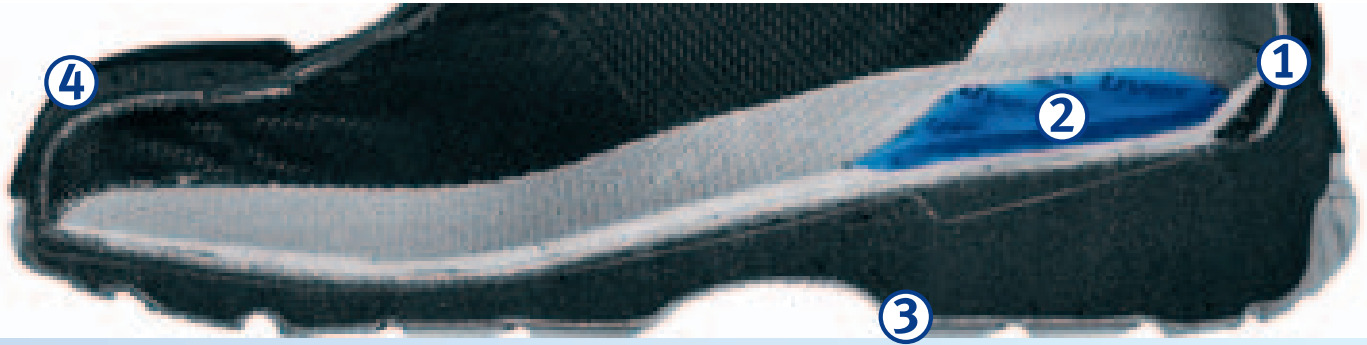


## uvex trekking sole

- nitrile rubber sole
- extremely comfortable underfoot
- particularly chunky, firm gripping and durable climbing tread, self-cleaning
- highly abrasion-resistant
- extremely anti-slip
- highly cut-resistant
- largely acid and alkali-resistant
- outsole is heat-resistant for brief exposure up to +300 °C
- antistatic
- oil and petrol-resistant



# uvex quatro



**1. uvex anti-twist**  
The combination of stabilisers in the sole with the new injection-moulded plastic heel cap offers significantly improved stability and greater twist protection.



**2. uvex hydroflex® GEL**  
This insole with the uvex hydroflex® GEL shock absorption element provides outstanding comfort right beneath the heel. Orthopaedically tested, this elastic sole absorbs horizontal and vertical impact. Non-irritating and breathable, it keeps feet feeling comfortable.



**3. uvex quatro**  
The broad sole and deep tread design ensure optimal non-slip properties. The specially rounded indentations in the sole prevent the tread from gathering dirt, guaranteeing optimal grip. In addition, an injection-moulded scuffcap and heel cap ensure all-round foot protection in all situations.

**uvex softgrip**  
The abrasion-resistant dual sole made from reactive elastomer is designed to be antistatic and lightweight. It offers optimal slip prevention and shock absorption properties in both the heel and front section. The extremely soft midsole is guaranteed to be highly comfortable underfoot even after long periods of wear.



**4. uvex footfit-system**  
Pioneering, anatomically shaped lasts with curved heel and rounded edges for greater comfort after long periods of wear.



## uvex quatro sole

- PUR DUO sole for outdoor use
- extremely comfortable underfoot due to particularly soft midsole and stable PU outsole
- highly effective non-slip properties due to special tread design
- integrated PU scuffcap and PU heel cap to protect leather upper
- side stabilisers to prevent ankle twisting
- outsole is heat-resistant to +120 °C
- antistatic
- oil and petrol-resistant
- silicone-free
- self-cleaning tread



# uvex quatro

GORE-TEX®



## uvex quatro · 8414 S3 WR

Attractive and waterproof modern shoe

- extra wide fit
- sturdy water-repellent full-grain leather
- comfortable padding on shaft
- durable waterproof, yet breathable GORE-TEX® lining
- dust tongue
- new, improved, ultra comfortable removable insole, antistatic, with a moisture control system endures a superior climate and improved comfort
- the latest generation of uvex hydroflex® GEL for optimal shock absorption in the heel area
- outdoor sole with integrated heel stabiliser and protector
- foamed scuffcap to protect leather upper
- steel midsole

art.-no.	8414.2
standard	EN ISO 20345 S3 WR
size	38 - 48



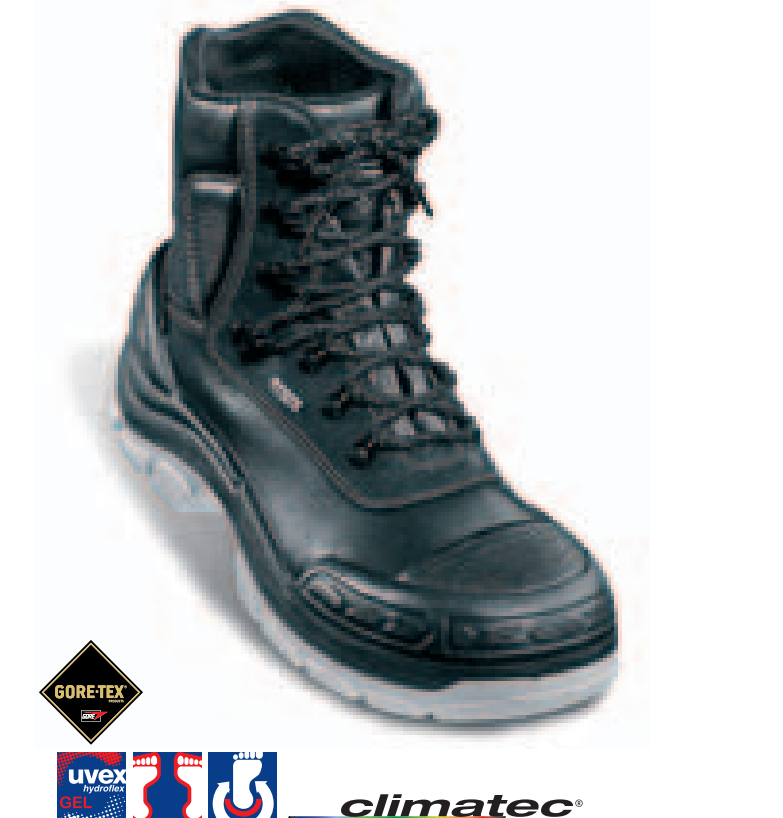
climatec®

## uvex quatro · 8415 S3 WR

Attractive and waterproof ankle boot

- extra wide fit
- sturdy water-repellent full-grain leather
- comfortable padding on collar
- durable waterproof, yet breathable GORE-TEX® lining
- dust tongue
- new, improved, ultra comfortable removable insole, antistatic, with a moisture control system endures a superior climate and improved comfort
- the latest generation of uvex hydroflex® GEL for optimal shock absorption in the heel area
- outdoor sole with an integrated heel stabiliser and protector
- foamed scuffcap to protect the leather upper
- steel midsole

art.-no.	8415.2
standard	EN ISO 20345 S3 WR
size	38 - 48



climatec®

# uvex quatro

outdoor



## uvex quatro · 8410 S3

Sturdy and innovative shoe

- extra wide fit
- robust water repellent full-grain leather
- comfortable padding on collar
- breathable textile lining
- dust tongue
- new, improved, ultra comfortable removable insole, antistatic, with a moisture control system ensuring a superior climate and improved comfort
- outdoor sole with integrated heel stabiliser and protector
- foamed scuffcap to protect leather upper
- steel midsole

art.-no.	8410.3
standard	EN ISO 20345 · S3
size	38 - 48
without GEL shock absorption system	

art.-no.	8410.2
standard	EN ISO 20345 · S3
size	38 - 48
with the latest generation of GEL shock absorption	



## uvex quatro · 8411 S3 / S2

Modern and sturdy ankle boot

- extra wide fit
- robust water repellent full-grain leather
- comfortable padding on collar
- breathable textile lining
- dust tongue
- new, improved, ultra comfortable removable insole, antistatic, with a moisture control system ensuring a superior climate and improved comfort
- outdoor sole with integrated heel stabiliser and protector
- foamed scuffcap to protect leather upper
- steel midsole

art.-no.	8411.3
standard	EN ISO 20345 · S3
size	38 - 48
without GEL shock absorption system	

art.-no.	8411.2
standard	EN ISO 20345 · S3
size	38 - 48
with the latest generation of GEL shock absorption	

art.-no.	8411.9
standard	EN ISO 20345 · S2
size	38 - 48
without steel midsole	
with the latest generation of GEL shock absorption	



# uvex quatro

winter



## uvex quatro - 8412 S3 CI

- Sturdy and comfortable lace-up winter boot
- extra wide fit
  - robust water repellent full-grain leather
  - soft and comfortable padding on collar
  - warm fleece lining
  - dust tongue
  - cold-resistant interior
  - removable insole
  - outdoor sole with integrated heel stabiliser and protection
  - foamed scuffcap to protect leather upper
  - steel midsole

art.-no.	8412.3
standard	EN ISO 20345 - S3 CI
size	38 - 48



## uvex quatro - 8413 S2 CI / S3 CI

Comfortable and sturdy winter boot

- extra wide fit
- robust water repellent full-grain leather
- internal zip for quick changing
- warm fleece lining
- cold-resistant interior
- removable insole
- outdoor sole with integrated heel stabiliser and protection
- foamed scuffcap to protect leather upper

art.-no.	8413.0
standard	EN ISO 20345 - S2 CI
size	38 - 48

art.-no.	8413.3
standard	EN ISO 20345 - S3 CI
size	38 - 48
but with steel midsole	





### uvex office · 9542 S1P



- Office shoe in a classic English design, brogue style with wing tip.
- comfortable fit
  - supple, full-grain leather upper
  - breathable lining
  - ultra comfortable insole with hydroflex® GEL shock absorption system
  - polyurethane sole
  - with a steel midsole

art.-no.	9542.2
standard	EN ISO 20345 · S1P
size	38 - 47

### uvex office · 9541 S1

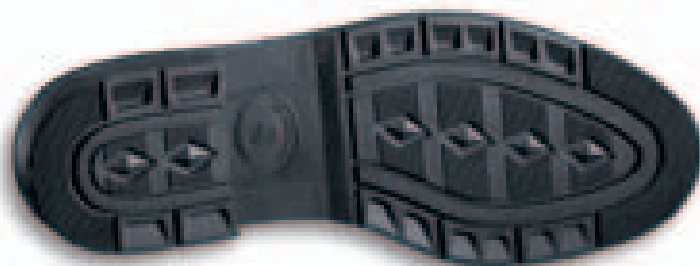
Office shoe in a classic, timeless design

- comfortable fit
- supple full-grain leather upper
- breathable lining
- ultra comfortable insole with hydroflex® GEL shock absorption system
- nitrile rubber sole

art.-no.	9541.9
standard	EN 345-1 · S1
size	38 - 47



### uvex office sole



- Office sole made of nitrile rubber
- extremely comfortable underfoot
  - non-slip
  - abrasion-resistant
  - highly cut-resistant
  - outsole is heat-resistant for brief exposure up to +300 °C
  - antistatic
  - oil and petrol-resistant
  - highly acid and alkali-resistant

- Office sole made from polyurethane
- extremely comfortable underfoot
  - non-slip
  - abrasion-resistant
  - highly cut-resistant
  - outsole is heat-resistant for brief exposure up to +120 °C
  - antistatic
  - oil and petrol-resistant
  - but with steel midsole

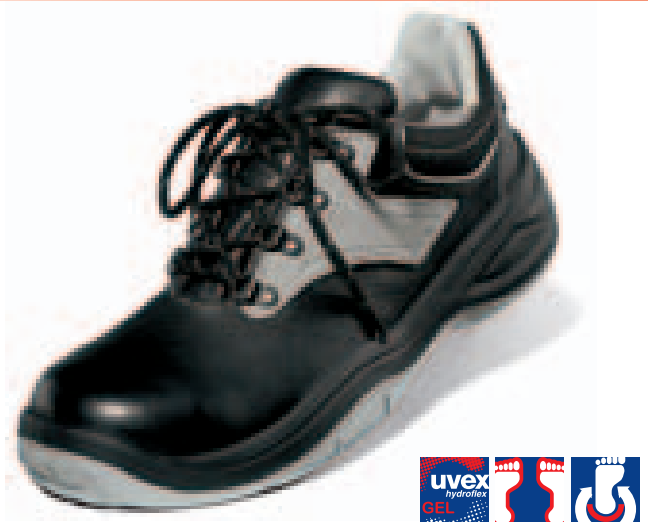


# Occupational shoes

*Shoes without a steel toecap*



## uvex module 2000 · 8625 02



Comfortable and innovative sport-style shoe

- wide sports fit
- robust water repellent full-grain leather
- padded Cordura collar
- reflector strips for enhanced safety
- breathable textile lining
- dust tongue
- new, improved, ultra comfortable removable insole, antistatic, with a moisture control system ensuring a superior climate and improved comfort
- latest generation of uvex hydroflex® GEL for optimal shock absorption in the heel area
- innovative dual softgrip outsole made from reactive elastomer

art.-no.	8625.1
standard	EN 347-1 02
size	38 - 48
Occupational shoe without toecap	

## uvex module 2000 · 8626 02

Comfortable and innovative sport-style ankle shoe

- wide sports fit
- robust water repellent full-grain leather
- padded Cordura collar
- reflector strips for enhanced safety
- breathable textile lining
- dust tongue
- new, improved, ultra comfortable removable insole, antistatic, with a moisture control system ensuring a superior climate and improved comfort
- latest generation of uvex hydroflex® GEL for optimal shock absorption in the heel area
- innovative dual softgrip outsole made from reactive elastomer

art.-no.	8626.1
standard	EN 347-1 02
size	38 - 48
Occupational shoe without toecap	



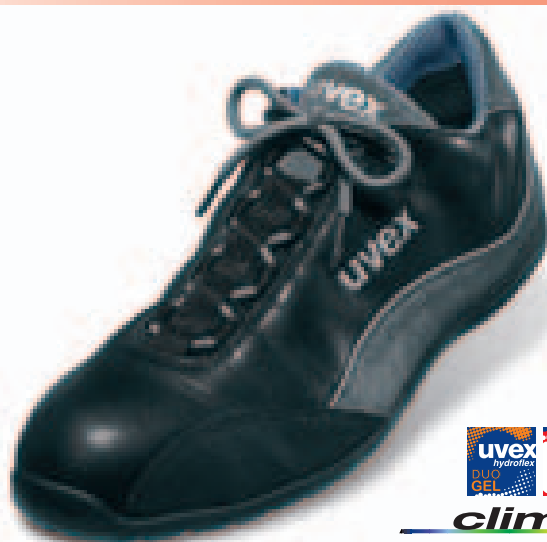
## uvex motor sports · 9496 01

Ultra modern shoe with a motor sports look

- fashionable fit
- highly breathable and flexible nappa leather upper
- breathable textile lining
- extra long lacing area for greater adaptability to individual foot shapes
- comfortable padding on the shaft and tongue
- new, improved, ultra comfortable removable insole, antistatic, with a moisture control system ensures a superior climate and improved comfort
- the latest generation of uvex hydroflex® DUO GEL provides for optimal shock absorption in the heel area
- reflector strips for enhanced safety

- soft, shock-absorbing midsole
- exceptionally flexible abrasion-resistant non-slip rubber outsole

art.-no.	9496.1
standard	EN ISO 20347 01
size	36 - 48
Occupational shoe without toecap	



# Accessories

## uvex inlay soles



9595.0

9595.1

climatec®



### Ultra comfortable uvex hydroflex® DUO GEL climatic insole

- very high capacity to absorb and wick moisture away ensures a balanced shoe climate
- the latest generation of newly developed uvex hydroflex® DUO GEL, visible from above, with 2 densities for even more effective needs-based shock absorption
- placement of shock absorption system directly beneath the heel
- antistatic system
- supports the foot arch

art.-no.	9595.0
size	36 - 48
designed for the uvex motorsport range	

art.-no.	9595.1
size	36 - 48
designed for the uvex athletic gravity zero range	

### Ultra comfortable uvex hydroflex® GEL climatic insole

- very high capacity to absorb and wick moisture away ensures a balanced shoe climate
- newly developed uvex hydroflex® GEL, visible from above, for even more effective shock absorption
- placement of shock absorption system directly beneath the heel
- antistatic system
- supports the foot arch

art.-no.	9595.7
size	35 - 50
designed for the uvex xenova® nrj, uvex xenova® pro, uvex xenova® air and uvex motion pro range, width 10	

art.-no.	9595.8
size	35 - 50
designed for the uvex xenova® nrj, uvex xenova® pro, uvex xenova® air and uvex motion pro range, width 11	

art.-no.	9595.9
size	35 - 50
designed for the uvex xenova® nrj, uvex xenova® pro, uvex xenova® air and uvex motion pro range, width 12	



9595.7

9595.8

9595.9



climatec®

# Accessories

## uvex inlay soles

### Ultra comfortable uvex hydroflex® GEL climatic insole



- extreme capacity to absorb and wick moisture away ensures a balanced shoe climate
- newly developed uvex hydroflex® GEL, visible from above, for greater effective shock absorption
- placement of shock absorption system directly beneath the heel
- antistatic system
- supports the foot arch

art.-no.	9598.4
designed for the uvex athletic, module, origin and quatro range	
size	35 - 50

art.-no.	9598.6
designed for the uvex naturform	
size	38 - 48

### uvex comfort cork inlay sole

- breathable natural cork footbed
- active coal prevents foot odour
- antistatic
- uvex hydroflex® GEL for optimal shock absorption in heel area
- effective ventilation system
- comfortable underfoot
- optimal foot environment

art.-no.	9598.2
size	38 - 48



### uvex foam latex inlay sole

- extremely comfortable
- woven material with active coal
- excellent moisture absorption
- antistatic
- can be individually tailored

art.-no.	9598,542
size	32 - 46



We also deliver replacement laces for our safety shoes on request.

# Accessories

## Dunlop

### DUNLOP Acifort Heavy Duty safety boot · 9875.6 S5

Long PVC safety boot

- shaft height: 37.5 cm
- with steel cap and steel midsole
- colour: yellow
- resistant to fuels, alkali, acids and disinfectants

art.-no.	9875.6
standard	EN 345-1 · S5
size	37 - 48



### DUNLOP Acifort Heavy Duty safety boot · 9877.3 S5

Long PVC safety boot

- shaft height: 37.5 cm
- with steel cap and steel midsole
- colour: black
- resistant to fuels, alkali, acids and disinfectants

art.-no.	9877.3
standard	EN 345-1 · S5
size	40 - 49



### uvex tricot liner socks · 9875.4

- kind to skin
- extremely high moisture absorption
- washable to 30 °C
- elastic

art.-no.	9875.4
size	39 - 48



# Accessories

*uvex care system*

## nano shoe add

### nano shoe add on shoe impregnation

- waterproof and dirt-repellent due to the modification of surfaces by nanotechnology
- suitable for textiles and leather products
- the breathability of the shoe is totally preserved
- textural qualities are totally preserved
- long-lasting action
- no propellants

### nano shoe add in silver ionic shoe disinfectant

- antimicrobial action through the use of silver compounds modified by nanotechnology
- the antimicrobial properties of silver have been known for thousands of years
- odour is effectively prevented
- long-lasting action
- no propellants

art.-no.	9698.100
content	100 ml

art.-no.	9698.200
content	100 ml



## akileine shoe and foot care

### Sports Akileine deo shoe spray

- pleasant apple fragrance
- neutralises unpleasant odours

art.-no.	9692.000
content	150 ml

### Akileine ultra fresh spray

- relaxing and refreshing
- with melilot

art.-no.	9690.000
content	150 ml

### Akileine antiperspirant spray

- reduces foot sweat
- inhibits sweaty odours

art.-no.	9691.000
content	100 ml



# uvex socks

with X-technology of **X-Technology**® Swiss Ltd



Anatomically shaped footbed for the „L“-left and „R“-right foot with integrated AirConditioning Channel® and Traverse Airflow Channel System

Patented temperature-regulating sock: USA Patent No. 6286151 · European Patent No. 1011352 · Australian Patent No. 742686  
 SkinNODOR®, SilverNODOR®, Aktiv Bund® (self-adjusting cuff), X-Cross® bandage and AirConditioning Channel® are registered trademarks of **X-TECHNOLOGY** SWISS  
[www.x-technology.com](http://www.x-technology.com)

## PROFI PLUS

The light choice: perfect for high seasonal temperatures, this short sock is particularly lightweight. A temperature-regulating yarn compound rapidly wicks moisture from the skin to the outer surface of the sock. The duckbill-shaped foot guard protects the foot from pressure points and skin irritation. Muscles, tendons and joints are protected and stabilised by the LowCut X-Cross® bandage.

**Materials:**  
 SkinNODOR® and Mythlan.  
 All protectors made from Robur.

colour	black/grey/orange
<b>size</b>	<b>art.-no.</b>
35 - 38	9596.138
39 - 41	9596.141
42 - 44	9596.144
45 - 47	9596.147
48 - 50	9596.150



## PROFI PLUS

Material:	Technical composition:
Nylon 79 %	SkinNODOR® 38 %
Elastodiene 11 %	Robur 25 %
Polypropylene 9 %	Nylon 17 %
Elastane 1 %	Elastodiene 11 %
	Mythlan 9 %

## PROFI WARM

Profi Warm delivers comfort which starts at the cuff and extends right down to your toes. The protective and padded zones (duckbill-shaped with microfibre yarns) support your foot and a perfect fit and non-slip position are guaranteed by the extra wide self-adjusting cuff. In addition, breathable materials ensure that your feet remain dry and well ventilated.

**Materials:**  
 Durawool footbed with merino wool and duckbill-shaped foot guard in microfibre. (This fibre ensures outstanding comfort and an exceptional fit.)

colour	dark grey/mottled grey
<b>size</b>	<b>art.-no.</b>
35 - 38	9597.138
39 - 41	9597.141
42 - 44	9597.144
45 - 47	9597.147
48 - 50	9597.150



Anatomically shaped footbed for the „L“-left and „R“-right foot with integrated AirConditioning Channel® and Traverse Airflow Channel System

Patented temperature-regulating sock: USA Patent No. 6286151 · European Patent No. 1011352 · Australian Patent No. 742686  
 SkinNODOR®, SilverNODOR®, Aktiv Bund® (self-adjusting cuff), X-Cross® bandage and AirConditioning Channel® are registered trademarks of **X-TECHNOLOGY** SWISS  
[www.x-technology.com](http://www.x-technology.com)

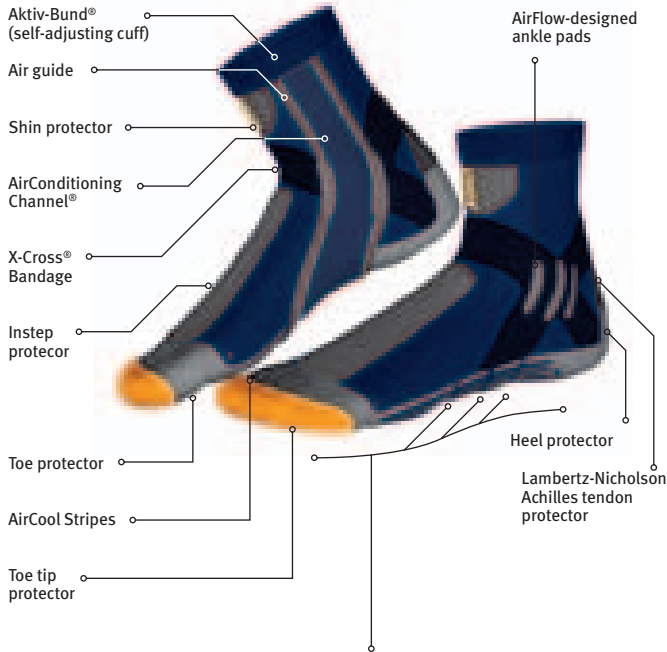
## PROFI WARM

Material:	Technical composition:
Nylon 45 %	Durawool 33 %
Polypropylene 26 %	Nylon 29 %
Merino wool 17 %	Robur 17 %
Acrylic 6 %	Mythlan 9 %
Elastodiene 6 %	Elastodiene 6 %
	Microfibre 6 %



# uvex socks

with X-technology of **X-Technology**® Swiss Ltd



Anatomically shaped Sinofit™ footbed for the „L“-left and „R“-right foot with integrated AirConditioning Channel® and Traverse Airflow Channel System

Patented temperature-regulating sock: USA Patent No. 6286151 · European Patent No. 1011352 · Australian Patent No. 742686  
 SkinNODOR®, SilverNODOR®, Aktiv Bund® (self-adjusting cuff), X-Cross® bandage and AirConditioning Channel® are registered trademarks of **X-TECHNOLOGY** SWISS  
[www.x-technology.com](http://www.x-technology.com)

## PREMIUM

For higher temperatures – with real silver. The sock is extremely lightweight and the „Air“ ventilation system provides the barefoot feel that is typical of x socks. With Sinofit™: SilverNODOR® & Fungus Ion Treatment, the unique solution for preventing foot odour and fungal infection.

**Materials:**  
 Silver footbed in Sinofit™, SkinNODOR® with antibacterial silver ions, Robur for padding.

colour	dark blue/grey/orange	
size	art.-no.	
35 - 38	9596.238	
39 - 41	9596.241	
42 - 44	9596.244	
45 - 47	9596.247	
48 - 50	9596.250	



## PREMIUM

**Material:**

Nylon	72%
Elastodiene	10%
Polypropylene	10%
Polyester	7%
Silver	1%

**Technical composition:**

SkinNODOR®	36%
Robur	22%
Nylon	14%
Elastodiene	10%
Mythlan	10%
SilverNODOR®	8%

## PREMIUM WARM

For the cold and wet seasons – with real silver. Apart from being extremely comfortable to wear, the high shaft of this sock makes it ideal for outdoor use during the cold and wet months. Footbed in Sinofit™: SilverNODOR® & Fungus Ion Treatment, the unique solution for preventing foot odour and fungal infection. Durawool yarn.

colour	blue, red, grey	
size	art.-no.	
35 - 38	9597.238	
39 - 41	9597.241	
42 - 44	9597.244	
45 - 47	9597.247	
48 - 50	9597.250	



Anatomically shaped Sinofit™ footbed for the „L“-left and „R“-right foot with integrated AirConditioning Channel® and Traverse Airflow Channel System

Patented temperature-regulating sock: USA Patent No. 6286151 · European Patent No. 1011352 · Australian Patent No. 742686  
 SkinNODOR®, SilverNODOR®, Aktiv Bund® (self-adjusting cuff), X-Cross® bandage and AirConditioning Channel® are registered trademarks of **X-TECHNOLOGY** SWISS  
[www.x-technology.com](http://www.x-technology.com)



## PREMIUM WARM

**Material:**

Acrylic	27 %	<b>Technical composition:</b>	DuraWool	30 %
Nylon	26 %		Acrylic	27 %
Polypropylene	23 %		Nylon	18 %
Merino wool	15 %		Mythlan	9 %
Elastodiene	6 %		Robur	8 %
Polyester	2 %		Elastodiene	6 %
Silver	1 %		SilverNODOR®	2 %



ART.	PAGE	EN 345-1 ENISO 20345	SIZES	SERIE	DESCRIPTION
8410.2	46	S3	38-48	uvex quatro	men's shoe, PUR-DUO sole, steel midsole, hydroflex® GEL
8410.3	46	S3	38-48	uvex quatro	men's shoe, PUR-DUO sole, steel midsole
8411.2	46	S3	38-48	uvex quatro	men's boot, PUR-DUO sole, steel midsole, hydroflex® GEL
8411.3	46	S3	38-48	uvex quatro	men's boot, PUR-DUO sole, steel midsole
8411.9	46	S2	38-48	uvex quatro	men's boot, PUR-DUO sole, hydroflex® GEL
8412.3	47	S3 CI	38-48	uvex quatro	men's boot, PUR-DUO sole, steel midsole, warm fleece lining
8413.0	47	S2 CI	38-48	uvex quatro	men's boot, PUR-DUO sole, zipper, warm fleece lining
8413.3	47	S3 CI	38-48	uvex quatro	men's boot, PUR-DUO sole, zipper, steel midsole, warm fleece lining
8414.2	45	S3 WR	38-48	uvex quatro	men's shoe, PUR-DUO sole, steel midsole, GORE-TEX® lining, hydroflex® GEL
8415.2	45	S3 WR	38-48	uvex quatro	men's boot, PUR-DUO sole, steel midsole, GORE-TEX® lining, hydroflex® GEL
8450.2	40	S3 CI HI HRO	38-48	uvex origin	men's shoe, PUR-nitrile sole, steel midsole, hydroflex® GEL
8450.9	40	S2 CI HI HRO	38-48	uvex origin	men's shoe, PUR-nitrile sole, hydroflex® GEL
8451.2	40	S3 CI HI HRO	38-48	uvex origin	men's boot, PUR-nitrile sole, steel midsole, hydroflex® GEL
8451.9	40	S2 CI HI HRO	38-48	uvex origin	men's boot, PUR-nitrile sole, hydroflex® GEL
8454.2	39	S3 CI HI HRO	38-48	uvex origin	men's boot, PUR-nitrile sole, steel midsole, hydroflex® GEL
8454.9	39	S2 CI HI HRO	38-48	uvex origin	men's boot, PUR-nitrile sole, hydroflex® GEL
8463.9	41	S2 HI HRO	38-48	uvex origin	men's welding boot, PU rubber sole, hydroflex® GEL
8464.9	41	S2 HI HRO	38-48	uvex origin	men's foundry boot, PU rubber sole, quick-action fastening, hydroflex® GEL
8465.0	41	S2 HI HRO	38-48	uvex origin	men's foundry boot, PU rubber sole, quick-action fastening
8617.4	37	S1	35-50	uvex module ESD	shoe, perforated, ESD litegrip sole, hydroflex® GEL
8625.1	49	O2	38-48	uvex module 2000	shoe, softgrip sole, hydroflex® GEL, without toecap: occupational shoe
8626.1	49	O2	38-48	uvex module 2000	boot, softgrip sole, hydroflex® GEL, without toecap: occupational shoe
8633.2	30	S1 P	38-48	uvex module 2000	men's sandal, softgrip sole, steel midsole, hydroflex® GEL
8633.9	30	S1	38-48	uvex module 2000	men's sandal, softgrip sole, hydroflex® GEL
8634.2	30	S3	38-48	uvex module 2000	men's shoe, softgrip sole, steel midsole, hydroflex® GEL
8634.9	30	S2	38-48	uvex module 2000	men's shoe, softgrip sole, hydroflex® GEL
8635.2	30	S3	38-48	uvex module 2000	men's boot, softgrip sole, steel midsole, hydroflex® GEL
8635.9	30	S2	38-48	uvex module 2000	men's boot, softgrip sole, hydroflex® GEL
8644.4	36	S1	38-48	uvex module ESD	men's sandal, ESD litegrip sole, hydroflex® GEL
8645.4	36	S2	38-48	uvex module ESD	men's shoe, ESD litegrip sole, hydroflex® GEL
8646.4	36	S2	38-48	uvex module ESD	men's boot, ESD litegrip sole, hydroflex® GEL
8654.9	31	S1	38-50	uvex module 2000	men's sandal, softgrip sole, hydroflex® GEL
8655.9	31	S2	38-50	uvex module 2000	men's shoe, softgrip sole, hydroflex® GEL
8656.9	31	S2	38-50	uvex module ESD	men's boot, softgrip sole, hydroflex® GEL
8670.4	37	S1	35-42	uvex module ESD	ladies sandal, ESD litegrip sole, hydroflex® GEL
8670.9	32	S1	35-42	uvex module ladies	ladies sandal, litegrip sole, hydroflex® GEL
8671.4	37	S2	35-42	uvex module ESD	ladies shoe, ESD litegrip sole, hydroflex® GEL
8671.9	32	S2	35-42	uvex module ladies	ladies shoe, litegrip sole, hydroflex® GEL
8675.9	33	S2	35-42	uvex module ladies	ladies shoe, softgrip sole, hydroflex® GEL
8676.9	33	S2	35-42	uvex module ladies	ladies boot, softgrip sole, hydroflex® GEL
8678.9	32	S1	35-42	uvex module ladies	ladies sandal, litegrip sole, hydroflex® GEL
9450.2	26	S1P	36-48	uvex athletic	sandal, PUR-nitrile sole, hydroflex® GEL, penetration-resistant xenova® midsole
9450.9	26	S1	36-48	uvex athletic	sandal, PUR-nitrile sole, hydroflex® GEL
9451.9	26	S1	36-48	uvex athletic	shoe, perforated, PUR-nitrile, hydroflex® GEL
9452.2	27	S3	36-48	uvex athletic	shoe, PUR-nitrile sole, hydroflex® GEL
9452.9	27	S2	36-48	uvex athletic	shoe, PUR-nitrile sole, hydroflex® GEL
9453.9	27	S2	36-48	uvex athletic	boot, PUR-nitrile sole, hydroflex® GEL
9460.9	26	S1	36-48	uvex athletic	sandal, PUR-nitrile sole, hydroflex® GEL
9462.9	27	S2	36-48	uvex athletic	shoe, PUR-nitrile sole, hydroflex® GEL
9464.8	25	S3 WR	36-48	uvex athletic gravity zero	shoe, uvex xenova® duo toe cap, PUR-nitrile sole, GORE-TEX® XCR® lining, hydroflex® DUO GEL, penetration-resistant xenova® midsole
9465.8	25	S3 WR	36-48	uvex athletic gravity zero	boot, uvex xenova® duo toe cap, PUR-nitrile sole, GORE-TEX® XCR® lining, hydroflex® DUO GEL, penetration-resistant xenova® midsole
9466.8	25	S2 WR	36-48	uvex athletic gravity zero	shoe, uvex xenova® duo toe cap, PUR-nitrile sole, GORE-TEX® XCR® lining, hydroflex® DUO GEL
9467.8	25	S2 WR	36-48	uvex athletic gravity zero	boot, uvex xenova® duo toe cap, PUR-nitrile sole, GORE-TEX® XCR® lining, hydroflex® DUO GEL
9486.9	34	S1	35-42	uvex ladies sports	ladies shoe, PU rubber sole, hydroflex® GEL
9487.9	34	S1	35-42	uvex ladies sports	ladies shoe, PU rubber sole, hydroflex® GEL
9488.9	35	S1	35-42	uvex ladies sports	ladies shoe, PU rubber sole, hydroflex® GEL
9489.9	35	S1	35-42	uvex ladies sports	ladies shoe, PU rubber sole, hydroflex® GEL
9492.9	28	S1	36-48	uvex motorsport	boot, PU rubber sole, hydroflex® DUO GEL
9494.9	29	S1	36-48	uvex motorsport	shoe, PU rubber sole, hydroflex® DUO GEL
9495.9	29	S1	36-48	uvex motorsport	shoe, PU rubber sole, hydroflex® DUO GEL
9496.1	29/49	S1	36-48	uvex motorsport	shoe, PU rubber sole, hydroflex® GEL, without toecap: occupational shoe
9496.9	29	S1	36-48	uvex motorsport	shoe, PU rubber sole, hydroflex® GEL
9541.4	37	S1	38-47	uvex office ESD	men's shoe, ESD nitrile sole, hydroflex® GEL
9541.9	48	S1	38-47	uvex office	men's shoe, nitrile sole, hydroflex® GEL
9542.2	48	S1P	38-47	uvex office	men's shoe, PUR sole, hydroflex® GEL, steel midsole
9581.2	42	S3	38-47	uvex performance	men's shoe, Mono-PUR performance sole, steel midsole, hydroflex® GEL
9581.9	42	S2	38-48	uvex performance	men's shoe, Mono-PUR performance sole, hydroflex® GEL
9582.2	42	S3	38-47	uvex performance	men's boot, Mono-PUR performance sole, steel midsole, hydroflex® GEL
9582.9	42	S2	38-47	uvex performance	men's boot, Mono-PUR performance sole, hydroflex® GEL
9592.8	43	S3	36-48	uvex trekking	men's boot, uvex xenova® toe cap, nitrile rubber trekking sole, steel midsole, hydroflex® GEL
9875.6	52	S5	37-48		PVC boot
9877.3	52	S5	40-49		PVC boot

#### ACCESSORIES/UVEX CARE SYSTEM

9595.0	50	-	36-48	Ultra comfortable uvex hydroflex® DUO GEL climatic insole
9595.1	50	-	36-48	Ultra comfortable uvex hydroflex® DUO GEL climatic insole
9595.7	50	-	35-50	Ultra comfortable uvex hydroflex® GEL climatic insole xenova®
9595.8	50	-	35-50	Ultra comfortable uvex hydroflex® GEL climatic insole xenova®
9595.9	50	-	35-50	Ultra comfortable uvex hydroflex® GEL climatic insole xenova®
9596.1	54	-	35-49	Profi Plus uvex sock with x-Technology
9596.2	55	-	35-49	Premium uvex sock with x-Technology
9596.5	14	-	35-49	Profi Plus uvex sock with x-Technology
9597.1	54	-	35-49	Profi Winter uvex sock with x-Technology
9597.2	55	-	35-49	Premium Winter uvex sock with x-Technology
9598.2	51	-	38-48	uvex hydroflex® GEL cork inlay sole, antistatic
9598.4	51	-	35-48	uvex hydroflex® GEL comfort inlay sole athletic, module, quatro and origin, antistatic
9598.542	51	-	32-46	Foam latex inlay sole, antistatic, with active coal, can be individually tailored
9598.6	51	-	38-48	uvex hydroflex® GEL comfortable insole, naturally shaped, antistatic
9690.0	53	-	-	Akileine Ultra-Fresh Spray
9691.0	53	-	-	Akileine Anti-Perspirant Spray
9692.0	53	-	-	Sports-Akileine Deo Schuh-Spray
9698.1	53	-	-	uvex nano shoe add on shoe impregnation
9698.2	53	-	-	uvex nano shoe add in ilver ionic shoe disinfectant
9875.4	53	-	39-48	tricot liner socks

#### SAFETY CATEGORIES IN ACCORDANCE WITH ISO 20345

<b>SB</b>	Specification for safety shoes for industrial use with a steel toecap of 200 joules resistance
<b>S1</b>	Areas in which the effects of moisture are not expected to be a factor. Antistatic properties and enclosed heel also required.
<b>S2</b>	Areas in which the effects of damp can also be expected. In addition to S1, also water-repellent (water-resistant) leather.
<b>S3</b>	Areas for S2 shoes in which penetration resistance (steel midsole) and a treaded sole are also required.
<b>S5</b>	Wet areas in which penetration resistance (steel midsole) and a treaded sole are also required.

# uvex Safety Footwear

## Labelling

Manufacturer's identification mark → uvex

Manufacturer's type designation → 51 6922.8 42

Number of European standard → EN ISO 20345:2004

Symbol for protection → S2

CE symbol → CE

Size → 42

Date of manufacture → 07/06

Article number → country of origin ITALY

## Footwear symbols for industrial usage

Basic requirements/additional requirements/ categories e.g. for leather shoes	Safety footwear EN ISO 20345 or EN 345-1	Protective footwear EN ISO 20346 or EN 346-1	Occupational footwear EN ISO 20347 oder EN 347-1	
Basic requirements for shoes and impact resistance of toecaps	SB 200 Joule	PB 100 Joule	OB No requirement	The choice of a particular shoe depends on the type of occupational risk. As with all the footwear, additional requirements may exist (e.g. in terms of heat and cold insulation, penetration resistance or electrical resistance via ESD). These shoes are then marked accordingly.
Additional requirements: Closed heel Antistatic Energy absorption around heel	S1	P1	O1 + fuel-resistant sole	
Additional requirements: as above, plus Water penetration Water absorption	S2	P2	O2	
Additional requirements: as above, plus Penetration resistance Cleated outsole	S3	P3	O3	The testing principles for all basic and additional requirements are specified in DIN EN 344-1 / -2 and EN ISO 20344.
Basic requirements/additional requirements/ categories e.g. for shoes made from PVC or PU				
Basic requirements for shoes and impact resistance of toecaps	SB 200 Joule	PB 100 Joule	OB No requirement	
Additional requirements: Antistatic Energy absorption around heel Penetration resistance Cleated outsole	S5	P5	O5	

## Additional requirements for special applications with corresponding symbols

SYMBOL	RISK COVERED	EN ISO 20345:2004 or EN 345					EN ISO 20347:2004 or EN 347			
		SB	S1	S2	S3	S5	OB	O1	O2	O3
-	Basic	Meets	Meets	Meets	Meets	Meets	Meets	Meets	Meets	Meets
P	Penetration resistance	Meets	Meets	Meets	Meets	Meets	Meets	Meets	Meets	Meets
A	Antistatic footwear	Meets	Meets	Meets	Meets	Meets	Meets	Meets	Meets	Meets
E	Energy absorption around heel	Meets	Meets	Meets	Meets	Meets	Meets	Meets	Meets	Meets
HI	Heat insulation	Meets	Meets	Meets	Meets	Meets	Meets	Meets	Meets	Meets
CI	Cold insulation	Meets	Meets	Meets	Meets	Meets	Meets	Meets	Meets	Meets
WRU	Water resistance of upper	Meets	Meets	Meets	Meets	Meets	Meets	Meets	Meets	Meets
HRO	Heat resistance of outsole (+300 °C/min)	Meets	Meets	Meets	Meets	Meets	Meets	Meets	Meets	Meets
WR	Whole shoe waterproof	Meets	Meets	Meets	Meets	Meets	Meets	Meets	Meets	Meets

Meets the specified requirement      Requirement can be met but is not stipulated



# Content

## *uvex Safety Footwear*

uvex xenova® climatec® ESD	14
uvex xenova® air ESD	16
uvex xenova® nrj ESD	18
uvex xenova® pro ESD	20
uvex motion ESD	22
uvex athletic gravity zero	24
uvex athletic	26
uvex motorsport	28
uvex module 2000	30
uvex module ladies	32
uvex ladies sports	34
uvex ESD ESD	36
uvex origin 3000	39
uvex origin 2000	40
uvex origin 1000	41
uvex performance	42
uvex trekking	43
uvex quatro GORE-TEX®	45
uvex quatro outdoor	46
uvex quatro winter	47
uvex office	48
uvex occupational shoes	49
Accessories	50
uvex socks with X-technology	54
Overview	56

# uvex

PROTECTING PEOPLE



Experience innovation!

UVEX ARBEITSSCHUTZ GMBH  
Wuerzburger Strasse 181-189  
D-90766 Fuerth  
P.O. Box 2542 · D-90715 Fuerth  
Phone: +49 911 9736-0  
Fax: +49 911 9736-1760  
E-Mail: [serviceteam@uvex.de](mailto:serviceteam@uvex.de)  
<http://www.uvex-safety.com>  
Member of the uvex group

